



Empowering you to work smarter

N1DX Flex-X Manifold Gauge with HD Color Graphic Interface

User Manual



NAVAC Inc.
www.NavacGlobal.com
Tel/Fax: +1 877 MY-NAVAC
877 696 2822
MADE IN PRC



Failure to follow warnings could
result in death or serious injury.

**SAVE THIS MANUAL
FOR FUTURE REFERENCE**

CONTENTS

1. Safety Information	01
2. Product Overview	02
3. Technical Specification	02
4. Screen Display	03
5. Indicator Icons	04
6. Pressure Calibration&Alarm	04
7 Device Standby/Off	04
8. Button Function	05
9. Exploded View	06

1. Safety Information

Use this instrument only as specified in this manual. Failure to do so may impair the protection provided by the instrument.

Follow these safety guidelines to avoid personal injury or death:

- Most governments and legal authorities require HVAC technicians to be trained and certified in the safe and proper operation of HVAC tools, such as this instrument. Since this tool may be connected to various types of equipment through an unlimited combination of hoses and fittings, proper training is crucial for the safe operation of this tool.
- Read the entire user manual before using the instrument.
- Use the instrument only as described in the user manual. Failure to do so may impair the protection provided by the equipment.
- Do not use the instrument if it is damaged. Before using the instrument, inspect the case for any cracks or loose components.
- The instrument contains no internal, user-serviceable parts. Do not open the instrument.
- Do not use the instrument if it operates abnormally, as this may impair its protection. If in doubt, have the instrument serviced.
- Do not operate the instrument near explosive gases, vapor, or dust.
- The refrigerant database in this unit may include refrigerants classified as flammable. If such refrigerants are selected, the operator may require additional certifications and/or training. Consult your government and legal authority and fully comply with all requirements.
- Always wear eye and skin protection when working with refrigerants. Escaping refrigerant vapors can present a freezing danger. Never direct refrigerant vapors venting from hoses toward the skin.

Warning

This product operates under high pressure. Follow all safety guidelines regarding refrigerant handling including wearing Personal Protective Equipment such as safety glasses, and gloves.

Warning

This product contains a built-in lithium-ion battery.

- Do not disassemble, puncture, crush, or expose the battery to fire, high temperatures, or water.
- Use only the provided or compatible charger specified in the manual.
- Improper handling of the battery may cause fire, explosion, or serious injury.
- Dispose of the product following local regulations. Do not dispose of it with household waste.

2. Product Overview



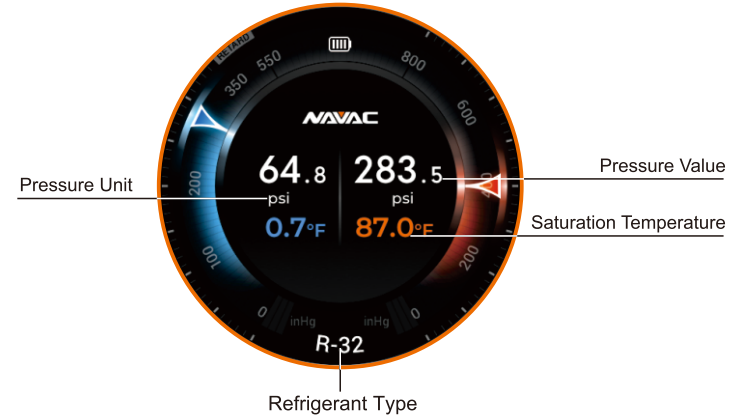
3. Technical Specification

Model	N1DX				
Pressure units	MPa, kPa, bar, psi, kgf/cm ²				
Temperature units	°F, °C				
Pressure measuring range	-29inHg ~ 725psi				
Resolution	0.01 bar	0.001 MPa	1 kPa	0.1 bar	0.01kgf/ cm ²
Operating environment	14 ~140°F (Charging: 32~104°F)				
Battery	3.7V, 3000mAh				
Connection port	1/4"				
Sensor	Analog Sensor				
100 Refrigerant Types	R-11, R-113, R-114, R-115, R-116, R-12, R1224yd(Z), R-123, R1233zd, R1233zd(E), R1234yf, R1234ze, R1234ze(E), R1234ze(Z), R-124, R1243zf, R-125, R-13, R-134a, R-22, R-23, R-236fa, R-245fa, R-290, R-32, R-401A, R-401B, R-401C, R-402A, R-402B, R-403A, R-403B, R-404A, R-405A, R-406A, R-407A, R-407B, R-407C, R-407D, R-408A, R-409A, R-41, R-410A, R-410B, R-411A, R-411B, R-412A, R-413A, R-414A, R-414B, R-415A, R-415B, R-416A, R-417A, R-417C, R-420A, R-421A, R-421B, R-422A, R-422B, R-422C, R-422D, R-424A, R-427A, R-428A, R-434A, R-437A, R-438A, R-447A, R-447B, R-448A, R-449A, R-450A, R-451A, R-451B, R-452A, R-452B, R-452C, R-453A, R-454A, R-454B, R-454C, R-455A, R-456A, R-458A, R-459A, R-459B, R-460A, R-460B, R-500, R-501, R-502, R-503, R-507A, R-508B, R-513A, R-600, R-600a, R-601, R-601A				

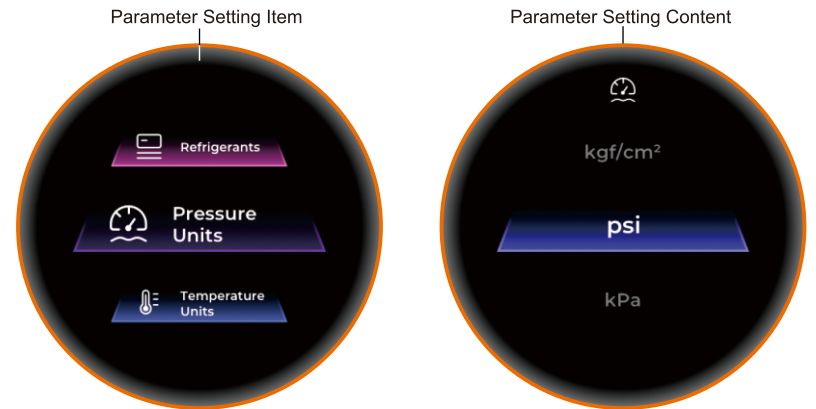


4. Screen Display

Main interface:

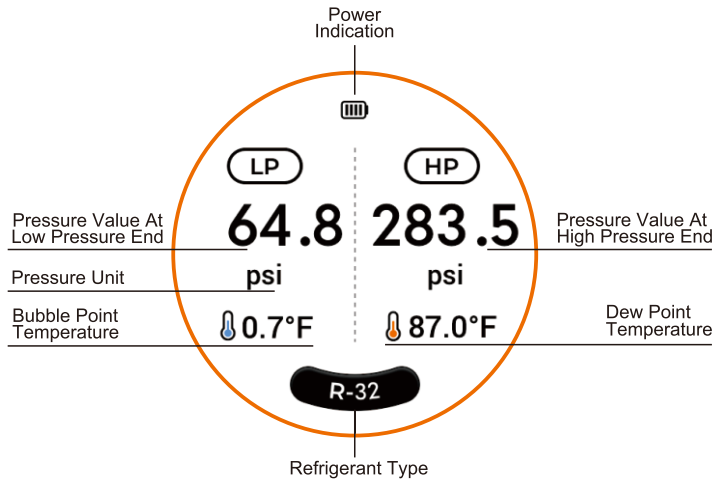


Parameter setting interface:



Parameter setting items	Parameter setting content
Refrigerant type	All refrigerants currently in device
Pressure units	psi, Mpa, bar, kg/cm ² , kPa (factory default psi)
Temperature units	°C, °F (factory default °F)
Shutdown settings	1 Hour/2 Hours/OFF (factory default 1H)
Always-on settings	2min/5min/10min/OFF (factory default 10min)
Version information	VER (hardware version): X.X.X (X stands for number or English) Reset to factory setting
Brightness	Adjustment Range: 10-100% Adjustment Step: 5% per step (factory default 70%)
Theme	5 types
Language	English, French, Spanish
E-Manual	Scan QR code for E-Manual

Daylight Mode Interface:



5. Indicator Icons

: Device battery level (Pre-charging square flashes when charging)	: Temperature units
: Refrigerant type	: Shutdown settings
: Pressure units	: Always-on settings
: Version information	: Brightness
: Mode	: E-manual
: Language	

6. Pressure Calibration & Alarm

Pressure wheel display: When the pressure value is greater than 0, both the pressure pointer and pressure bar point upward, When the pressure value is less than 0, both the pressure pointer and pressure bar point downward.

Pressure calibration: If the pressure value is not 0 when the pressure is atmospheric, press and hold the knob to reset the pressure to zero.

Pressure failure alarm: If the pressure sensor fails, the low-pressure side will display "E1" and the high-pressure side will display "E2," both flashing. The temperature will display "--.°".

7. Device Standby/Off

Auto shutdown: The device will automatically shut down when the pressure value reads 0, and the button is not operated. This will occur after reaching the set auto-shutdown time (factory default: 1 hour). In addition, the device will automatically shut down if the battery level is too low.

Auto screen off: If no buttons are pressed, and the pressure value stays at 0. When the set time is reached (factory default: 10 minutes), the device will automatically turn off the screen.

8. Button Function

The power button is on the left side of the device, while the knob button is on the right side.

Power on/off: Press and hold the power button for more than 2 seconds to turn on the device. When the device is on, press and hold the power button for more than 2 seconds to turn it off.

Parameter setting: Click the knob on the main interface to enter the parameter setting interface. You can select the parameter setting items and their contents by scrolling the knob. Click the knob to confirm the selected parameter setting items and contents.

Parameter setting interface:

- (1) The left side of the parameter setting interface displays the current parameter setting. The right side displays the content of the currently set parameter.
- (2) The initial selection cursor is located on the left side. By scrolling the knob up/down, the left parameter setting item will scroll up/down in a circular motion. The right parameter setting content will correspond to the selected option on the left. Click the power button to return to the main interface.
- (3) In the (2) interface, click the knob to select and enter the parameter content interface. Scroll the knob up/down to scroll the parameter content upward or downward in a circular motion.
- (4) In the (3) interface, click the knob to confirm the selected parameter content and return to the (2) interface.
- (5) Click the power button in the (3) interface. The selected parameter content will not be confirmed and will return to the (2) interface.

Reset to factory setting:

- (1) In the Parameter Settings interface, rotate the knob to select "Version Information," then press the knob to enter.
- (2) Within the parameter menu, rotate the knob to select "Resetting to factory settings."
- (3) Press the knob to initiate parameter reset.
- (4) Caution: During the reset process, pressing the power button will cancel the reset operation.



Warning

Restoring factory settings will restart the device and restore all parameter settings and calibration values to factory default configuration.

9. Trouble Shooting

Possible Cause	Remedy
Atmospheric pressure reading not zero when open to atmosphere	Perform a pressure zero calibration operation

10. Maintenance

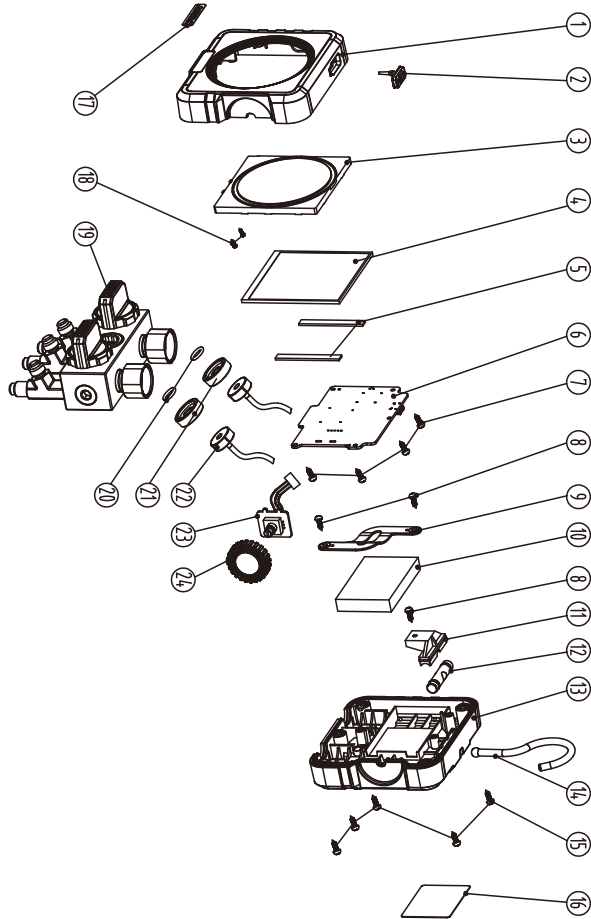
- 1) Avoid charging at high temperatures (>40°C) or low temperatures (<0°C). High temperatures may cause thermal runaway, while low temperatures may lead to lithium-ion deposition, damaging the battery;
- 2) If you cannot troubleshoot the device yourself, promptly contact the after-sales service center and provide detailed descriptions of the malfunction to professional technicians so they can provide accurate technical support and repair services quickly.

Correct disposal of this product:

This symbol indicates that this product should not be disposed of together with other household waste. To prevent uncontrolled waste disposal that may cause harm to the environment or human health, please use return and collection systems or contact the retailer from whom the product was purchased. They can ensure this product is recycled in an environmentally safe manner.



11. Exploded View



Spare Parts List

No.	Item
1	Front Case
2	USB Rubber Cover
3	Lens
4	LCD screen
5	Display Support Foam
6	PCBA
7	Screw
8	Screw
9	Battery Mounting Plate
10	Battery Assembly
11	Mounting Block Assembly
12	Rotating Column Assembly
13	Backshell
14	Foldable Hook
15	Screw
16	Label
17	Logo Label
18	Screw
19	Valve Body Assembly
20	O ring
21	Nut
22	Sensor Assembly
23	Encoder PCB
24	Knob