



Service Bulletin

Reference Number	SB-MG-0001
Date	June 9 2025
Product	Digital Manifold Gauge
Affected Model(s)	N2DX ver. 1.0.3

Issue: Accidentally entered calibration mode or Need to Calibrate the N2DX Digital manifold Gauge.

Note: Please check you are using **Ver 1.0.3**

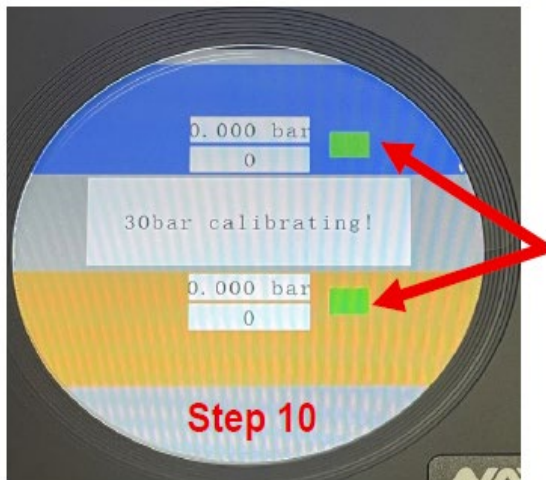
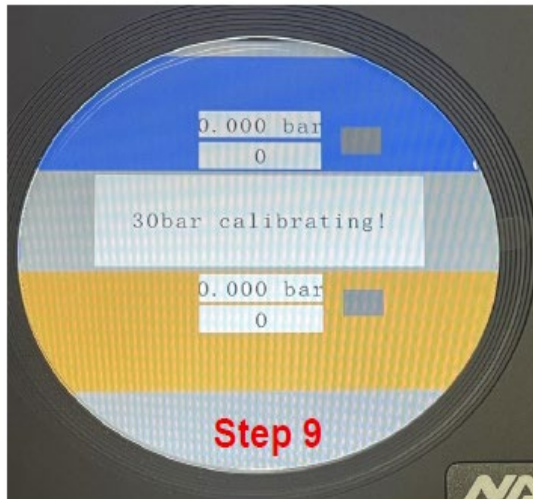
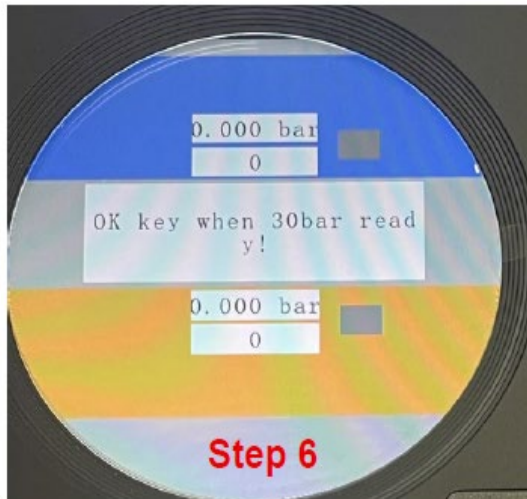
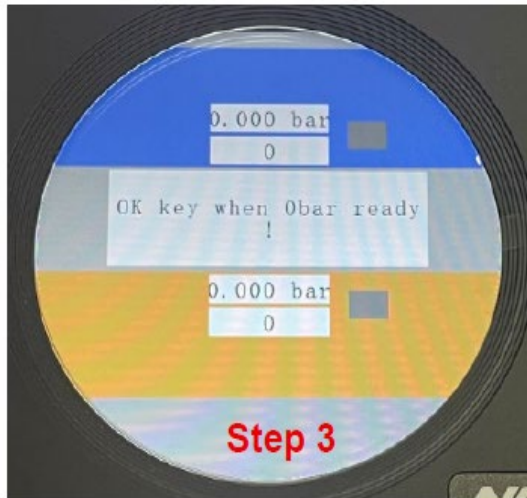
Solution: If you have accidentally entered calibration mode, to exit without calibration, you will need to Power off the unit and Power on. **Do not press the Function knob (Right knob)**

If you have accidentally calibrated the N2DX, please follow the steps below to Re-Calibrate it correctly.

1. Open Valves on gauge
2. With the Power off, **Enter Calibration Mode** by Pressing and Holding both the Power and Function Knob simultaneously for 3 seconds.
3. Screen will Read "Ok Key when 0 Bar Ready!"
4. Press the Function Knob once, Screen will change to "0 Bar Calibrating!"
5. Cap-off both the Low and High side ports and close gauge valves
6. Press the Function knob once, screen will read "OK Key when 30 Bar Ready!"
7. Set your Nitrogen regulator to output 30 Bar (434 psi) and attach hose to the center port.
8. Let it sit for 30 seconds to stabilize and **make sure you are at 30 Bar before continuing.**
9. Open Both Low and High Side valves and press the Function Knob, screen will then read "30 Bar calibrating"
10. Press the Function Knob one more time, The Gray indicator boxes will change to Green
11. Press and hold the Power button to turn off the gauge.
12. Close the Nitrogen Tank and release the pressure from the gauge and disconnect your hose.
13. Turn the gauge on.

If done correctly your gauges will read 0 zero psi, you can confirm with a known pressure to be sure they are accurate.

This material is published for informational purposes only and intended for use only by persons qualified for the specific tasks shown. Qualified personnel are those who, based on their training and experience, are capable of identifying risks and avoiding possible hazards when handling or servicing a product. Only qualified personnel should repair products powered by electricity. Any attempt to handle, service or repair the product or products by anyone other than qualified personnel could result in serious injury or death. You agree that your use of and dependence on this information is at your sole risk. This information is subject to change or update without notice. There are no warranties, either expressed or implied, regarding the accuracy or completeness of this information.



This material is published for informational purposes only and intended for use only by persons qualified for the specific tasks shown. Qualified personnel are those who, based on their training and experience, are capable of identifying risks and avoiding possible hazards when handling or servicing a product. Only qualified personnel should repair products powered by electricity. Any attempt to handle, service or repair the product or products by anyone other than qualified personnel could result in serious injury or death. You agree that your use of and dependence on this information is at your sole risk. This information is subject to change or update without notice. There are no warranties, either expressed or implied, regarding the accuracy or completeness of this information.