

NAVAC® Inc.

Lyndhurst, NJ 07071
Tel/Fax: +1 877 MY-NAVAC
877 696 2822
Info@NavacGlobal.com
www.NavacGlobal.com

NAVAC

Empowering you to work smarter



TABLE OF CONTENTS

1	Tubing Tools	
	BreakFree® Power Flaring Tool	01
	BreakFree® Power Tube Expander	03
	BreakFree® Power Tube Bender	05
	Ratcheting Tube Bender	07
	Tube Expander	08
	Hydraulic Tube Expander	09
	Digital Torque Wrench	10
	Flaring Tool	11
	Hand and Drill-Powered Flaring Tool	12
	Tube Cutter	13
	Internal & External Reamer	14
	Tube Deburring Tool	15
	Mini-Split Tool Kit	16
	Tubing Tool Kit	17
	Flare Gauge	18
19	Refrigerant Recovery	
	NR7 Recovery Unit	19
	NRDD Digital DC Recovery Unit	21
	NRDDF Recovery Unit for Flammable Refrigerants	22
	NRDC4M 4-Cylinder Recovery Unit	23
24	Vacuum Pumps	
	BreakFree® Cordless Vacuum Pump	24
	Pro Series Vacuum Pump	28
	Vacuum Pump for Flammable Refrigerants	30
	Smart Vacuum Pump	31
	NP12DM Vacuum Pump	34
	Ammonia Vacuum Pump	35
	Industrial Vacuum Pump	36
	Battery Power Accessories	38
	VacShield Premium Vacuum Pump Oil	39
	Vacuum Pump Accessories	40
43	Testing Tools & Instruments	
	Smart Probe Kit	41
	Smart Refrigerant Flow Control Kit	42
	Bluetooth Temperature Clamps w. Digital Display	43
	Large Bluetooth Temperature Clamp with Digital Display	44
	Bluetooth Pressure Probe with Digital Display	45
	Bluetooth Psychrometer with Digital Display	46
	Smart Refrigerant Scale	47
	Smart Refrigerant Valve	48
	Premium Micron Vacuum Gauge	49
	Micron Vacuum Gauge	50
	Valve Core Removal Tool (VCRT)	51
	Thermal Imaging Camera	53
	Wireless Refrigerant Scale	55
	Wireless Refrigerant Scale, Large Weighing Pan	56
	Refrigerant Leak Detector	57
	Digital Clamp Meter	58
	Infrared Thermometer	59
62	Manifold Gauges	
	Flex72 Manifold Gauge with Digital Display	60
	Flex-X Manifold Gauge with HD Color Digital Display	61
	NEXUS Digital Manifold Gauge	63
	Pro Series Gauges	65
	Pro Plus Gauges	66
	Manifold Gauge Accessories	68
71	Hoses & Hose Kits	
	Hose Sets	69
	Color Hoses	69
	Big Boy Hoses	70
	Rapid Evacuation Kits	72
74	Condensate Management	
	Mini Condensate Pump	72
	Condensate Pump	73
76	Utility & Lifestyle Tools	
	LED Penlight	74
	LED Headlamp	75
	Folding Utility Knife	76
	2-IN-1 Compact Folding Knife	77
80	Fittings	
	Rapid Y Connection	78
	4-Port Hose Hanger	79



Delivering unsurpassed customer value at every opportunity defines the mission of NAVAC. We empower HVAC technicians to work with more accuracy, ease, and efficiency. We achieve this by offering highly differentiated products with leading technology and superior quality. Among these products include the industry's first Brushless DC-Driven Vacuum Pump, North America's first Cordless Vacuum Pump, the world's first 4-Cylinder Digital DC Recovery Unit, and our unique line of battery-operated tubing tools. Among these products are AHR Expo Innovation Awards Winner and multiple Gold Winner Dealer Design Awards, cementing the value they have added to HVAC industry. These tools have served contractors well in delivering unprecedented performance while saving both time and money.

NAVAC | Empowering You to Work Smarter.

Empowering You to Work Smarter
Leading Technology · Superior Quality · Best Experience



NEF6LM

BreakFree® Power Flaring Tool



Weighing less than three pounds, the new Model NEF6LM Power Flaring Tool produces precise, automatic flares in a fraction of the time compared to traditional flaring methods. NAVAC's new cordless flaring solution makes flaring faster and far simpler without sacrificing accuracy or consistency. Offering easy flare connectivity, it can create flares in five sizes, ranging from 1/4" to 3/4". Designed to perform reliably in harsh environments, the NEF6LM Cordless Power Flaring Tool is your ideal flaring solution for mini-split ACs and VRF systems.

Leading Technology, Superior Quality, Best Experience.
Empowering You to Work Smarter



NEF6LM

BreakFree® Power Flaring Tool



NAQC Flare Clamp

Part No.	Tube OD
NAQC1	5/16"
NAQC2	1/4"
NAQC3	3/8"
NAQC4	1/2"
NAQC5	5/8"
NAQC6	3/4"

Quick Accurate Flaring · Ultra Light

- Complete a flare in 15 seconds
- Over 100 flares per charge
- Quick charge in 30 minutes
- Ultra light at 2.9 lbs
- Quick connect with ready-to-use clamps
- 45° flaring for mini-split VRF/VRV systems
- Limit baffle assures precise flare depth
- Easy one-button operation
- Battery power indicator
- LED flash light
- Flare gauge included



Model	NEF6LM
Battery Type	7.4V 2Ah 14.8Wh
Tubing Type	Soft (HVACR) Copper
Tube OD	1/4", 3/8", 1/2", 5/8", 3/4"
Weight	2.9 lbs (with battery)
Accessory	Carry Case, NFG1 Flare Gauge, 1 Battery, 1 Charger

NTE11L

BreakFree® Power Tube Expander PATENT PENDING

Get the job done quickly with the NTE11L BreakFree® Power Tube Expander. Expand a tube in 12 seconds by pressing one button. The long-lasting rechargeable lithium battery allows up to 200 expansions on a single charge. Battery and charger are compatible with NAVAC NEF6LM BreakFree® Power Flaring Tool. Expander heads from the NTE11H Hydraulic Expander can be shared with NTE11L with a NAQA1 adapter.

Leading Technology, Superior Quality, Best Experience.
Empowering You to Work Smarter



NTE11L

BreakFree® Power Tube Expander PATENT PENDING



Powerful, Quick & Accurate Expanding

- One-button operation
- Automatic pressure relief
- Quick connect heads
- Large capacity lithium battery
- Complete an expansion in 12 seconds
- Up to 200 expansions per charge
- Quick charge in 30 minutes
- Battery power indicator
- LED flash light

Model	NTE11L
Battery Type	7.4V 2Ah 14.8Wh
Tubing Type	Soft (HVACR) Copper
Tube OD	3/8", 1/2", 5/8", 3/4", 7/8", 1", 1-1/8"
Weight	3.4 lbs (with battery)
Accessory	Carry Case, 7 Expander Heads, 1 Battery, 1 Charger

NTB7L

BreakFree® Power Tube Bender

PATENT PENDING

It is a tough and frustrating job for HVAC Service Techs when bending large diameter tubes, which consumes tremendous labor work while needs precise focus on bending angles. Furthermore, to get the tube out of a traditional bender mandrel is another frustrating moment. Suitable for tubing sizing 1/4" to 7/8" OD, NAVAC NTB7L saves you tons of time, labor and makes the job much easier. By pressing a single controller switch, you can bend the tube to any desired angle. When a bend is completed, the baffle will push the tube out automatically while tool resets, helping you to remove the tube effortlessly. Its large capacity lithium battery makes over 100 bends each charge and can be fully charged in 30 minutes. Reverse bending kit NTB7R is available and sold separately.

Leading Technology, Superior Quality, Best Experience.
Empowering You to Work Smarter



NTB7L

BreakFree® Power Tube Bender

PATENT PENDING



Effortless & Quick Bending

Battery-Driven Effortless Bending

- Powerful for large size tubing
- Push and hold for 90° bending
- Automatic tube release

Large Lithium Battery

- Over 100 bends per charge
- Quick charge in 30 minutes

Patented Tubing Size Selector

- 7 sizes in one selector
- Easy to switch to different tubing size setting

Other Features

- Quick connect mandrel and crossbar
- Battery power indicator

Easy Operation

- Ergonomic handle design
- Stop any time for customized angles

Model	NTB7L
Battery Type	7.4V 2Ah 14.8Wh
Tubing Type	Soft (HVACR) Copper
Tube OD	1/4", 5/16", 3/8", 1/2", 5/8", 3/4", 7/8"
Weight	6.2 lbs (with battery)
Accessory	Carry Case, 3 Mandrels, 1 Battery, 1 Charger

NTB7

Ratcheting Tube Bender



Compact and Reliable

Easy and Fast Bending

- Quick connect mandrels
- Single crossbar for all sizes
- 90° bending angle marks
- Smooth sweep bends with no kinking

Patented Tubing Size Selector

- 7 sizes in one selector
- Easy switch to different tubing size

Other Features

- Ergonomic handle design
- Reverse bending structure available
- Light and compact design

Model	NTB7	
Tubing Type	Soft (HVACR) Copper	
Tube OD	1/4", 5/16", 3/8", 1/2", 5/8", 3/4", 7/8"	
Weight	3.7 lbs	
Accessory	4 Mandrels, Crossbar with Tubing Size Selectors, Carry Case, Reverse Bending Kit*	*Sold separately under NTBRK

NTE7

Tube Expander

NAVAC NTE7 Tube Expander, with its simple structure and foldable design, is convenient to carry and easy to use.

Leading Technology, Superior Quality, Best Experience.

Empowering You to Work Smarter



Easy to Expand

Easy to Carry

- Foldable design for portability

Easy to Use

- Simple structure for expanding copper tubing



Model	NTE7	
Tube OD	3/8", 1/2", 5/8", 3/4", 7/8"	

NTE11H2

Hydraulic Tube Expander



Effortless and Durable

Hydraulic Expander

- Vacuum sealed hydraulic system, no oil change needed
- Innovative hydraulic oil system design for easy expansion
- Suitable for large diameter copper

Compact, Easy to Use

- Convenient for narrow spaces
- Easy one-hand operation

Automatic Pressure Relief

- Tube released at final trigger compression
- Built-in manual relief button

Quick Connect Expander Heads

- Quarter-turn head design, quick to attach/remove

Model	NTE11H2	
Tubing Type	Soft (HVACR) Copper	
Tube OD	3/8", 1/2", 5/8", 3/4", 7/8", 1", 1-1/8", 1-1/4", 1-3/8", 1-1/2", 1-5/8" <small>*Sold separately under NTEQHK</small>	
Weight	2.3 lbs	
Accessory	NTD28 (Deburring Tool), Carry Case	

NTW1

Digital Torque Wrench



Digital Readout • Adjustable Jaw

- Accurate within 2%
 - Dual direction (CW & CCW)
 - 50 data memories & 9 pre-sets
 - Peak hold
- Auto turn-off after 5 minutes inactivity
 - Selectable measuring units (ft-lb, in-lb, N-m, kg-cm)
 - Indicator lights and sound for target torques

Model	NTW1	
Torque Measuring Range	3.1 - 62.7 ft-lb (4.2 - 85 N-m)	
Jaw Size	0.2 - 1.2 inch (5 - 30 mm)	
Weight	3 lbs	
Accessory	Storage Case	

NTF66

NTF66C

Flaring Tool

NAVAC Flaring Tools, with axial spacing and patented rivet connection, deliver consistent, accurate flaring each and every time. Nitride treatment makes them more robust and durable.

Leading Technology, Superior Quality, Best Experience.

Empowering You to Work Smarter



Accurate Flaring

- Axial Spacing**

 - Ensuring accurate and consistent flaring
- Nitride Treatment**

 - Longer service life
 - Robust and durable
- Patented Annular Rivet Connection**
- Internal Clutch**

 - Preventing over-torquing
- Eccentric Cone**

 - 45° flare for mini-split VRF/VRV systems
- Heavy-Duty Handle & Shaft**



Model	NTF66	NTF66C
Tube OD	1/4", 5/16", 3/8", 1/2", 5/8", 3/4"	1/4", 5/16", 3/8", 1/2", 5/8", 3/4"
Accessory	Carry Case	Carry Case, NTC12 (Cutter)

NTF67D

Hand and Drill-Powered Flaring Tool



Accurate Flaring

- Hand or Drill-Powered**

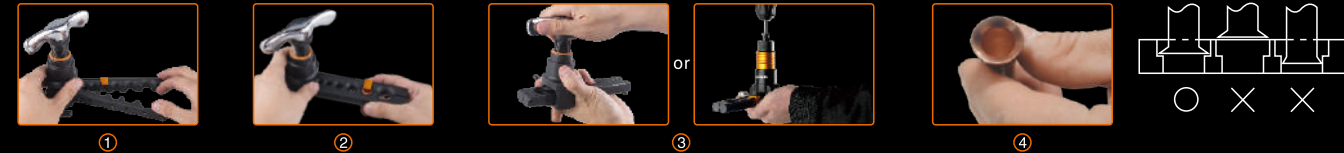
 - Efficient and labor-saving with drill attached
- Axial Spacing**

 - Axial spacing for accurate and consistent flaring
 - Eccentric cone with 45° flare
- Nitride Treatment**

 - Longer service life
 - Robust and durable
- Patented Annular Rivet Connection**
- Internal Clutch**

 - Preventing over-torquing
- Eccentric Cone**

 - 45° flare for mini-split VRF/VRV systems



Model	NTF67D
Tube OD	3/16", 1/4", 5/16", 3/8", 1/2", 5/8", 3/4"
Accessory	Carry Case, NFG1 Flare Gauge

NTC6
NTC12
NTC15
Tube Cutter

With a cutting blade, ball bearings and aluminum alloy body, it makes tube cutting easy and efficient.

Leading Technology, Superior Quality, Best Experience.

Empowering You to Work Smarter



Easy to Cut

High-Quality Cutting Blade

- Sharp and durable
- One extra blade supplied

Ball Bearing

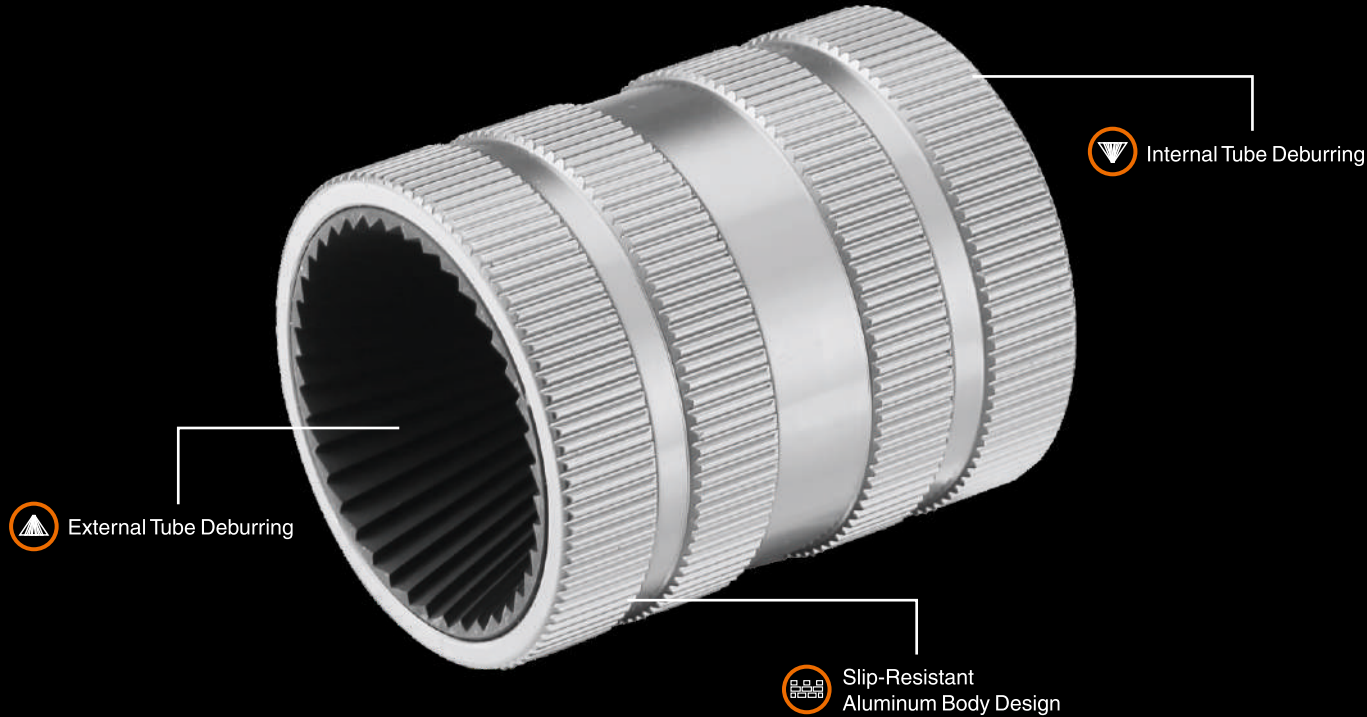
- Easy cutting and better quality
- Short cut for flare ends, saving copper

Aluminum Alloy

- Light weight, easy to carry and use
- Built to Last

Model	NTC6	NTC12	NTC15
Tube OD	1/8" ~ 3/4"	1/8" ~ 1-1/4"	1/4" ~ 1-5/8"
Blade Diameter	0.7" (18mm)	0.9" (23mm)	1.2" (30mm)

NTR14
Internal & External Reamer



Fast, Easy and Clean

Multi-Blade Alloy Steel Internal Surface

- Easy to clean internal and external tubing surfaces

Slip-Resistant Aluminum Body Design

- Light weight
- Durability

Model	NTR14
Tube OD	1/8" ~ 1-1/2"

NTD28
Tube Deburring Tool



Easy to Carry and Use

Replaceable Blades

- 2 spare blades included

Easy to Carry

NKS2
Mini-Split Tool Kit



NAVAC Advanced Tool Kit for Mini-Split Installation

NEF6LM Power Flaring Tool

- Quick accurate flaring
- Ultra light at 2.9 lbs

NTW1 Digital Torque Wrench

- Digital readout
- Adjustable jaw

NVR1 Valve Core Removal Tool

- 2 sizes (1/4" & 5/16") in 1 tool
- Designed for high-pressure refrigerants

Model	Item	Specification	Quantity	Warranty
NEF6LM	BreakFree Power Flaring Tool	Lithium battery: 7.4V 2Ah 14.8Wh Tube OD: 1/4", 3/8", 1/2", 5/8", 3/4"	1	2-year
NTW1	Digital Torque Wrench	3.1 - 62.7 ft-lb (4.2 - 85 N-m)	1	1-year
NVR1	Valve Core Removal Tool	Vacuum rated to 20 Microns For use with both 1/4" and 5/16" SAE	1	1-year
NHK1	30-Piece Hex Wrench Set	SAE: 7/250"-3/8" Metric: 0.7-10 mm	1	1-year
NTC6	Tube Cutter	Tube OD 1/8" ~ 3/4"	1	1-year
NTC12	Tube Cutter	Tube OD 1/8" ~ 1-1/4"	1	1-year
NTR14	Internal/External Reamer	Tube OD 1/8" ~ 1-1/2"	1	1-year
NTD28	Tube Deburrer	2 spare blades included	1	1-year
NFG1	Flare Gauge	Tube OD: 1/4", 5/16", 3/8", 1/2", 5/8", 3/4"	1	1-year
NAB1	Tool Bag	Heavy duty tool bag	1	1-year

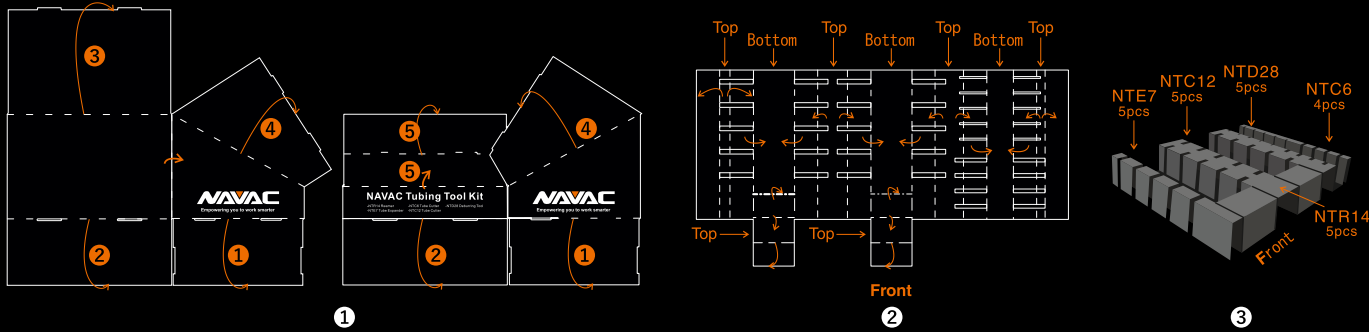
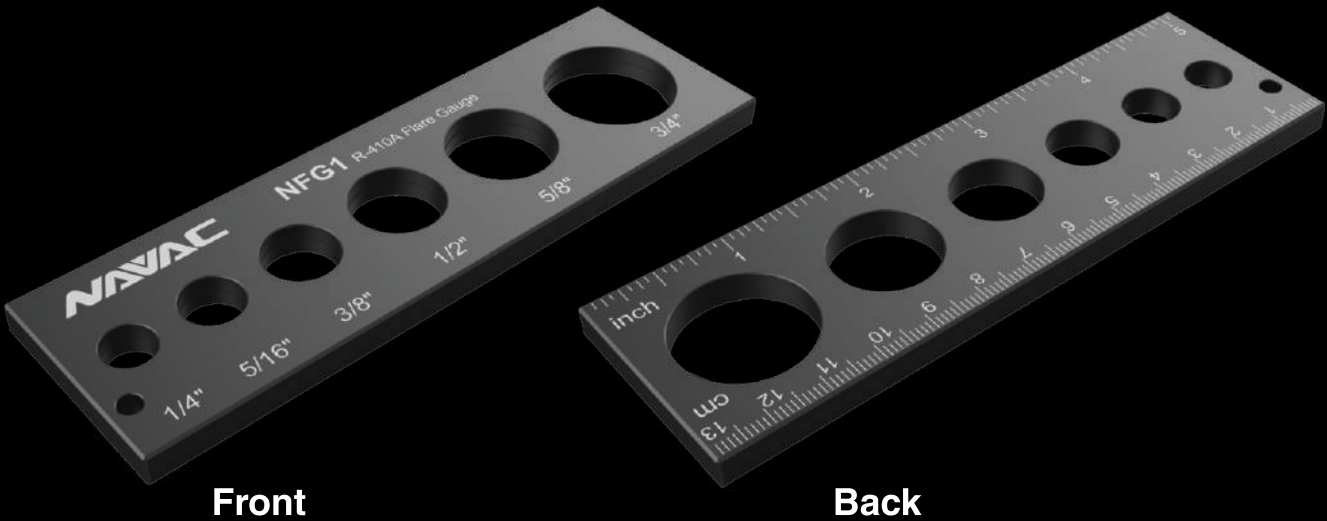
NTK1

Tubing Tool Kit



NFG1

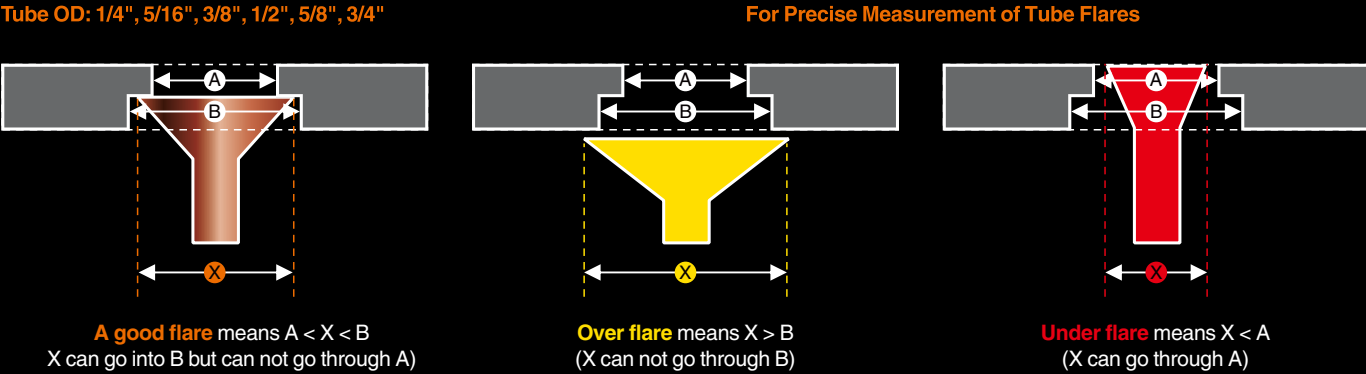
Flare Gauge



Your Favorite NAVAC Tubing Tools

Counter Displayable		Convenient Showcase		Easy to Refill	
Item	Description			Quantity	
NTE7	Tube Expander, Tubing OD 3/8", 1/2", 5/8", 3/4", 7/8"			5	
NTR14	Internal/External Reamer, 1-1/2" Max OD			5	
NTC12	Tube Cutter, 1/8"-1-1/4" Max OD			5	
NTC6	Tube Cutter, 3/4" Max OD			4	
NTD28	Tube Deburrer			5	

Ensuring Perfect Flares



NR7

Recovery Unit

Introducing the NR7 Recovery Unit, a compact and lightweight machine weighing just 20.3 lbs, ensuring easy storage and transportation for HVAC techs. With its brushless DC motor, the unit offers a soft starting experience. The NR7's purge function prevents refrigerant mixing, and its large condenser and oil-free compressor accommodate all common refrigerants, ensuring maximum efficiency for technicians. Moreover, the NR7 has CSA safety certification, providing technicians peace of mind with full-tank and high-pressure protection. Boasting an efficient design, twin-cylinder system, and one-key operation, the NR7 is a great choice for quick and reliable recoveries. A2L compatibility and a focus on user-friendly functionality establish the NR7 as a great solution for HVAC recovery needs.

Leading Technology, Superior Quality, Best Experience.
Empowering You to Work Smarter



Scan the QR code to learn more about features and benefits of the NR7 Recovery Machine.



NR7

Recovery Unit



Compact · Light · Swift

Compact and Light

- Small & light weight, only 20.3 lbs
- Easy to store and carry

Brushless DC Motor

- Soft & easy starting
- Compact & efficient

Fast Recovery

- Twin cylinder
- Large condenser

CSA Safety Certification

- Full-tank, Overload & High Pressure protection

One Key Operation

- Easy to use

Purge Function

- Prevent mixing of various refrigerants

Oil-Free Compressor

- Suitable for all common refrigerants

A2L Compatible

Model		NR7			
Refrigerant Type		Category III: R-12, R-134a, R-1234yf, R-401C, R-500 Category IV: R-22, R-401A, R-401B, R-402B, R-407C, R-407D, R-408A, R-409A, R-502, R-509 Category V: R-32, R-402A, R-404A, R-407A, R-407B, R-410A, R-454B, R-507			
Power Supply	V / Hz	115V / 60Hz			
Motor	HP	1			
Rated Current Draw	A	12.5			
Compressor		Oil-less, Air-cooled, Piston style			
Automatic Safety Shut-Off		558 psi / 38.5 bar			
Recovery Rate**	lbs / min (kg / min)		R-410A	R-22	R-134a
		Direct Vapor	0.54 (0.25)	0.58 (0.27)	0.47 (0.21)
		Direct Liquid	12 (5.5)	9 (4.1)	8 (3.6)
		Push / Pull Liquid	17 (7.8)	15.8 (7.2)	15 (6.8)
Dimension	in	12.2 × 9.4 × 9.6			
Weight	lbs	20.3			

**Please refer to NAVAC website for latest test results.

PRO
SERIES

RECOVERY
MACHINES

NRDD

Digital DC Recovery Unit



A2L
Compatible



Fastest in Its Class

Fastest in Direct Vapor for R410A, R22

- UL verified recovery rate, best performance in its class

Brushless DC Motor

- Light and more efficient

Large Backlit Display

- Easy-to-read large LCD display
- Backlit for clarity

Twin Cylinder with 2-Row Oversized Condenser




- Fast recovery

Oil-Free Compressor

- Suitable for all commonly used refrigerants

Purge Function

- Prevent mixing of various refrigerants

Model		NRDD			
Refrigerant Type		Category III: R-12, R-134a, R-401C, R-500, R-1234yf Category IV: R-22, R-401A, R-401B, R-402B, R-407C, R-407D, R-408A, R-409A, R-502, R-509 Category V: R-32, R-402A, R-404A, R-407A, R-407B, R-410A, R-454B, R-507			
Power Supply	V / Hz	115V / 60Hz			
Motor	HP	1			
Max Current Draw	A	12			
Compressor		Oil-less, Air-cooled, Piston style			
Automatic Safety Shut-Off		558 psi / 38.5 bar			
UL Verified Recovery Rate 	lbs / min (kg / min)		R-410A	R-22	R-134a
		Direct Vapor	0.75 (0.34) 	0.64 (0.29) 	0.57 (0.26)
		Direct Liquid	14.44 (6.55)	11.11 (5.04)	7.85 (3.56)
		Push / Pull Liquid	18.41 (8.35)	17.04 (7.73)	12.81 (5.81)
Dimension	in	14.5 x 9.9 x 11.7			
Weight	lbs	24.3			

*NAVAC offers a 2-year over-the-counter warranty, which can extend to 3 years with registration on navacglobal.com/product-registration within 30 days of purchase.

NRDDF

Recovery Unit for Flammable Refrigerants



A2L, A2 & A3
Compatible



Fast • Compact • Ignition-Proof

Sparkless, Ignition-Proof Design

- Designed and tested to UL 121201, CSA C22.2 No. 213-17 and IEC 60079-7 Standards
- Suitable for A2L, A2 and A3 refrigerants

Fast and Efficient Recovery

- Brushless DC motor
- Twin cylinder with 2-row oversized condenser

Large Backlit Display

- Easy-to-read large LCD display
- Backlit for clarity

Oil-Free Compressor


- Suitable for all commonly used refrigerants

Purge Function

- Prevent mixing of various refrigerants

IP54 Waterproof Design

- Tested to be waterproof and dustproof

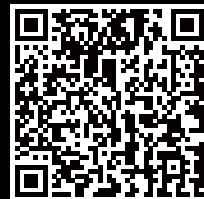
Model		NRDDF			
Refrigerant Type		Category III: R-12, R-134a, R-401C, R-500, R-1234yf, R-600a Category IV: R-22, R-401A, R-401B, R-402B, R-407C, R-407D, R-408A, R-409A, R-411A, R-411B, R-412A, R-454B, R-502, R-509, R-290 Category V: R-32, R-402A, R-404A, R-407A, R-407B, R-410A, R-507 **PROHIBITED to use with IIB and IIC refrigerants: RE170, R702, R1150, R429A, R432A, R435A, R510A.			
Power Supply	V / Hz	115V / 60Hz			
Motor	HP	1			
Max Current Draw	A	12			
Compressor		Oil-less, Air-cooled, Piston style			
Automatic Safety Shut-Off		558 psi / 38.5 bar			
UL Verified Recovery Rate 	lbs / min (kg / min)		R-410A	R-22	R-134a
		Direct Vapor	0.75 (0.34)	0.64 (0.29)	0.57 (0.26)
		Direct Liquid	14.44 (6.55)	11.11 (5.04)	7.85 (3.56)
		Push / Pull Liquid	18.41 (8.35)	17.04 (7.73)	12.81 (5.81)
Dimension	in	14.5 x 9.9 x 11.7			
Weight	lbs	24.3			

* For recovering only HVAC/R refrigerants from sealed HVAC/R systems. Warranty Voided if used for any other purposes.

NRDC4M 4-Cylinder Recovery Unit

4 - Cylinder

Industry Fastest



Scan to see recovery unit comparison sheet

A2L Compatible

DD 2020
DEALER DESIGN
AWARDS
the NEWS | **GOLD**

Dual Oil-Free Compressors

3 High-Speed Cooling Fans



3/8" Inlet Port 1/4" Outlet Port

Digital Backlit Display

Purge Function

Brushless DC Technology

World's First DC Inverter 4-Cylinder Recovery Unit Fastest · Most Powerful

4-Cylinder for Powerful Recovery

- Up to 40% faster than 2-cylinder unit
- Oversized inlet port for faster recovery

Large Digital Display

- Easy-to-read large LCD display
- Backlit for clarity

Super-Efficient Condenser

- Over-sized micro-channel coil
- 3 cooling fans

Dual Oil-Free Compressors

- Suitable for all commonly used refrigerants

Brushless DC Motor

- More efficient

Acceleration Knob Design

- To achieve faster vapor recovery

Model		NRDC4M			
Refrigerant Type		Category III: R-12, R-134a, R-401C, R-500, R-1234yf Category IV: R-22, R-401A, R-401B, R-402B, R-407C, R-407D, R-408A, R-409A, R-502, R-509 Category V: R-32, R-402A, R-404A, R-407A, R-407B, R-410A, R454B, R-507			
Power Supply	V/Hz	115V/60Hz			
Motor	HP	1.5			
Max Current Draw	A	12			
Compressor		Oil-less, Air-cooled, Piston style			
Automatic Safety Shut-Off		558 psi/38.5 bar			
UL Verified Recovery Rate	lbs/min (kg/min)		R-410A	R-22	R-134a
		Direct Vapor	1.06 (0.48)	0.99 (0.45)	0.84 (0.38)
		Direct Liquid	16.82 (7.63)	12.76 (5.79)	9.19 (4.17)
		Push/Pull Liquid	18.23 (8.27)	16.76 (7.60)	15.08 (6.84)
Inlet/Outlet Port	in	Inlet 3/8", Outlet 1/4"			
Dimension	in	17 x 10.7 x 12.2			
Weight	lbs	41.9			

NP2DLM BreakFree® Cordless Vacuum Pump

A2L Compatible

DD 2019
DEALER DESIGN
AWARDS
the NEWS | **GOLD**



Isolation Ball Valve

Backflow Prevention Check Valve



NB1 Battery

High-Performance Li-ion Battery

Brushless DC Technology



Compact, Light Weight, Easy to Carry.

Cordless · Compact · Convenient

High Performance Lithium Battery

- High capacity
- Up to 1 hour running time

Twin Cylinder

- Ultimate vacuum down to 23 microns

Brushless DC Technology

- Light weight at 8.4 lbs
- Highly efficient

Other Features

- Backflow prevention check valve
- Isolation valve

Compact Design

- Easy to carry
- Easy to store

Model		NP2DLM	
Li-ion Battery		NB1, 18V, 5Ah	
Flow Rate	CFM	2	
Ultimate Vacuum	micron	23	
Pump Design		Dual-Stage, DC Motor	
Motor Power	HP	1/6	
Inlet Port	in	1/4", 3/8" flare	
Oil Capacity	oz	5.1	
Dimension	in	9.2 x 3.5 x 7.5	
Weight	lbs	8.4 (with battery)	
Accessory		Carry bag, NB1 Battery, NC2 Battery Charger	

NP4DLM

BreakFree® Cordless Vacuum Pump



Cordless · Compact · Convenient

Highest Capacity Cordless Pump

- 4CFM
- Residential and light commercial applications

Compact Design

- Easy to carry
- Easy to store

High Performance Lithium Battery

- High capacity
- Up to 1 hour running time

Twin Cylinder

- High ultimate vacuum down to 15 microns

Brushless DC Technology

- Light weight at 15.4 lbs
- Highly efficient

Other Features

- Backflow prevention check valve
- Isolation valve & Lifting hook

Model		NP4DLM
Li-ion Battery		NBP2, 18V, 9Ah
Flow Rate	CFM	4
Ultimate Vacuum	micron	15
Pump Design		Dual-Stage, DC Motor
Motor Power	HP	1/2
Inlet Port	in	1/4", 3/8", 1/2" flare
Oil Capacity	oz	8.8
Dimension	in	12.4 x 4.4 x 9.4
Weight	lbs	15.4 (with battery)
Accessory		Carry bag, NBP2 Battery, NC2 Battery Charger

NP6DLM

BreakFree® Cordless Vacuum Pump



Cordless · Powerful · Convenient

Faster Evacuation w/ Increased Capacity

- 6 CFM with large oil tank
- Residential and light commercial applications

Compact Design

- Easy to carry
- Easy to store

Automatic Power Management

- Optimized battery performance
- Extended operation up to 1 hour

Dual-Stage

- High ultimate vacuum down to 15 microns

Brushless DC Technology

- Light weight at 21 lbs
- Highly efficient

Other Features

- Backflow prevention check valve
- Isolation valve & Lifting hook

Model		NP6DLM
Li-ion Battery		NBP2, 18V, 9Ah
Flow Rate	CFM	6
Ultimate Vacuum	micron	15
Pump Design		Dual-Stage, DC Motor
Motor Power	HP	1/2
Inlet Port	in	1/4", 3/8", 1/2" flare
Oil Capacity	oz	14.1
Dimension	in	14 x 5 x 10
Weight	lbs	21.2
Accessory		Carry Bag, NBP2 Battery, NC2 Battery Charger, Oil Bottle (Oil Not Supplied)



NP2D
NP4D
NP6D
BreakFree® Cordless Vacuum Pump (Pump Only)



NP6D
6 CFM, 15 Microns



NP2D
2 CFM, 23 Microns



NP4D
4 CFM, 15 Microns



Use NAVAC Battery for Best Performance

OR



Use Equivalent DEWALT® Battery + Battery Adapter (Included)

Cordless Vacuum Pumps Go Battery-Less?!

Use Your Favorite Battery with NAVAC Pump!

- Compatible with DEWALT® Batteries of similar spec
- Battery adapter included

Compact Design

- Easy to carry
- Easy to store

Automatic Power Management

- Optimized battery performance
- Extended operation

Dual-Stage

- High ultimate vacuum

Brushless DC Technology

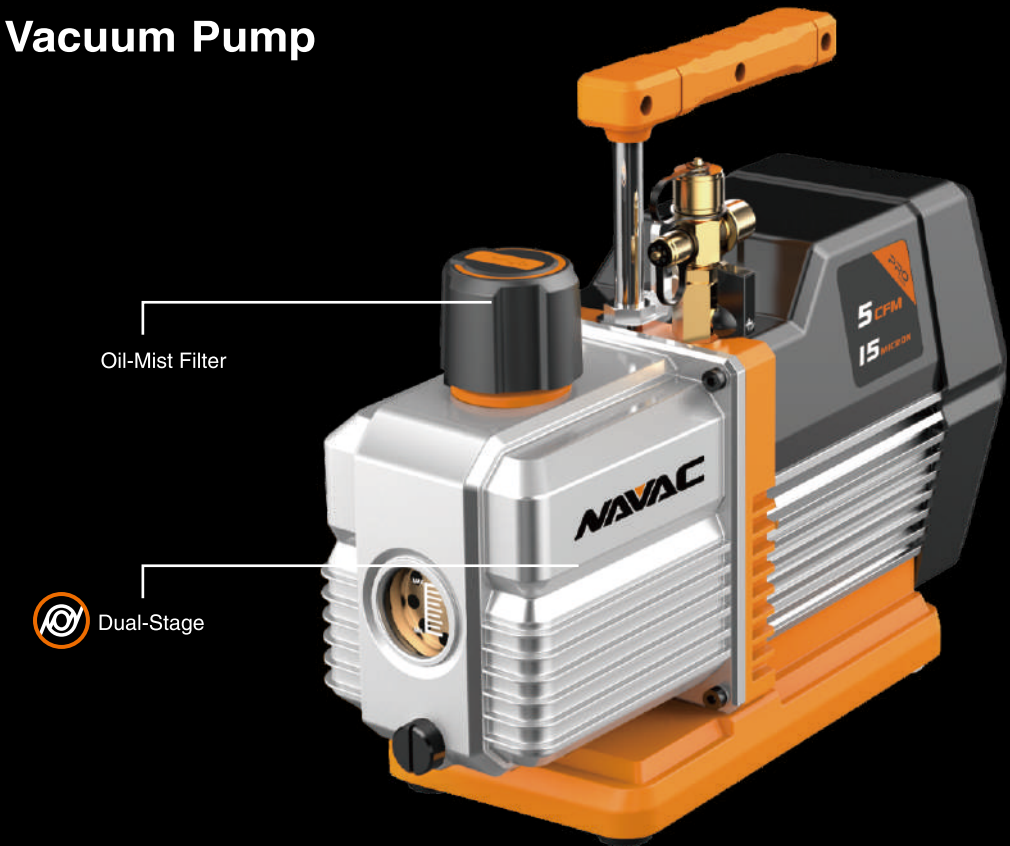
- Light weight
- Highly efficient

Other Features

- Backflow prevention check valve
- Isolation valve & Lifting hook

Model		NP2D	NP4D	NP6D
Li-ion Battery Requirement		18V, 5Ah	18V, 9Ah	18V, 9Ah
Flow Rate	CFM	2	4	6
Ultimate Vacuum	micron	23	15	15
Pump Design		Dual-Stage, DC Motor	Dual-Stage, DC Motor	Dual-Stage, DC Motor
Motor Power	HP	1/6	1/2	1/2
Inlet Port	in	1/4", 3/8" flare	1/4", 3/8", 1/2" flare	1/4", 3/8", 1/2" flare
Oil Capacity	oz	5.4	8.8	14.1
Dimension	in	7.7 x 3.5 x 7.6	10.3 x 4.8 x 9.5	11.8 x 5 x 10
Weight	lbs	7 (no battery)	14 (no battery)	19.1 (no battery)
Accessory		Carry Bag, NABA1 DEWALT Battery Adapter, Oil Bottle (Oil Not Supplied)		

NP5DP
NP7DP
Vacuum Pump



Oil-Mist Filter

Dual-Stage

Gas Ballast

Lifting Hook

Performance • Reliability

Dual-Stage Integrated Cylinder Design

- High ultimate vacuum
- High reliability

Forced Oil Circulation

- Improved efficiency and durability

Internal Check Valve

- Prevent oil backflow

Internal Check Valve

- Prevent oil backflow

Lifting Hook

- Safe & convenient for roof top use

Model		NP5DP	NP7DP
Power Supply	V / Hz	115V / 60Hz	115V / 60Hz 230V / 60Hz
Flow Rate	CFM	5	7
Run Load Amps	A	4.3	4 (115V), 1.8 (230V)
Ultimate Vacuum	micron	15	15
Pump Design		Dual-Stage, AC Motor	Dual-Stage, AC Motor
Motor Power	HP	3/4	3/4
Inlet Port	in	1/4", 3/8", 1/2" Flare	1/4", 3/8", 1/2" Flare
Oil Capacity	oz	17	15
Dimension	in	14 x 5 x 11.3	14 x 5 x 11.3
Weight	lbs	24.3	26

NP5DP2
NP7DP2

Vacuum Pump



Performance • Reliability

- A2L Compatible**
 - Expanded application

Dual-Stage Integrated Cylinder Design
 - High ultimate vacuum
 - High reliability

Premium Pump Features
 - Oil mist filter for noise and exhaust reduction
 - Gas ballast for moisture management
 - Manual ball valve for vacuum preservation
- Internal Check Valve**
 - Prevent oil backflow

Forced Oil Circulation
 - For fast and even oil distribution
 - Improved efficiency and durability

Lifting Hook
 - Safe & convenient for roof top use

Model		NP5DP2	NP7DP2
Power Supply	V/Hz	115V / 60Hz	115V / 60Hz
Flow Rate	CFM	5	7
Run Load Amps	A	3.8	4
Ultimate Vacuum	micron	15	15
Pump Design		Dual-Stage, AC Motor	Dual-Stage, AC Motor
Motor Power	HP	3/4	3/4
Inlet Port	in	1/4", 3/8", 1/2" Flare	1/4", 3/8", 1/2" Flare
Oil Capacity	oz	17	15
Dimension	in	14 x 5 x 11.3	14 x 5 x 11.3
Weight	lbs	24.3	26

NP7DPF

Vacuum Pump for Flammable Refrigerants



Reliability • Ignition-Proof

- Sparkless, Ignition-Proof Design**
 - Designed and tested to UL 121201, CSA C22.2 No. 213-17 and IEC 60079-7 Standards
 - Suitable for A2L, A2 and A3 refrigerants

Dual-Stage Integrated Cylinder Design
 - High ultimate vacuum
 - High reliability

Lifting Hook
 - Safe & convenient for rooftop use
- Internal Check Valve**
 - Prevent oil backflow

Forced Oil Circulation
 - Improved efficiency and durability

Model		NP7DPF
Power Supply		115V / 60Hz
Flow Rate	CFM	7
Run Load Amps	A	4
Ultimate Vacuum	micron	15
Pump Design		Dual-Stage, AC Motor
Motor Power	HP	3/4
Inlet Port	in	1/4", 3/8", 1/2" Flare
Oil Capacity	oz	15
Dimension	in	14 x 5 x 11.3
Weight	lbs	26

* For evacuation of sealed HVAC/R systems only. Warranty may void if used for any other purposes.

** PROHIBITED to use with IIB and IIC refrigerants: RE170, R702, R1150, R429A, R432A, R435A, R510A.

NRP6Di
NRP8Di

Smart Vacuum Pump



Brushless DC with Smart Control

Brushless DC Technology

- Light
- More efficient

Smart Control

- Extended evacuation for better vacuum
- Automatic control
- Task reminder

Built-In Micron Vacuum Gauge

- Precise vacuum measurement
- Digital display

Dual-Stage

- High ultimate vacuum

Solenoid Valve

- Prevent oil backflow
- Preserve vacuum

Model		NRP6D	NRP8D
Power Supply	V/Hz	115V / 60Hz	115V / 60Hz
Flow Rate	CFM	6	8
Ultimate Vacuum	micron	15	15
Pump Design		Dual-Stage, DC Motor	Dual-Stage, DC Motor
Motor Power	HP	3/4	3/4
Inlet Port	in	1/4", 3/8", 1/2" Flare	1/4", 3/8", 1/2" Flare
Oil Capacity	oz	17.6	17.6
Dimension	in	14 x 5.3 x 11.9	14 x 5.3 x 11.9
Weight	lbs	25.35	25.35

NP8DS
NP8DSV

Smart Vacuum Pump



Smart Evacuation

Oil Health Test Mode for Effective Evacuation

- One-touch oil check in 60 seconds
- Improved oil change practice
- Save money, save time, save environment

Set It and Forget It

- Preset vacuum and decay targets
- Automatic decay testing with on-screen results
- Solenoid valve for vacuum preservation

Remote Vacuum Gauge

- True system vacuum measurement
- Micron gauge can be used standalone
- Automatic evacuation and decay test

Dual-Stage

- High ultimate vacuum
- Reliable performance

Bluetooth Connectivity

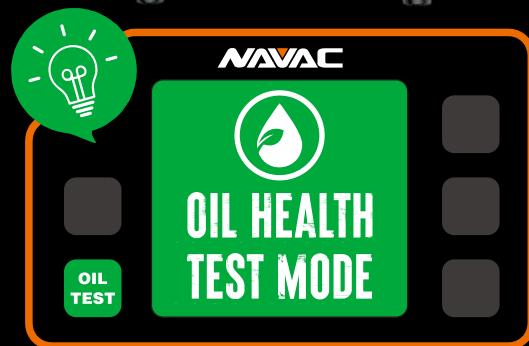
- Works wirelessly with myNAVAC™ App & NMV1S Micron Gauge
- On-pump readings

Easy to Use

- Built-in Micron gauge storage
- Lifting hook
- Prevent oil backflow

Model		NP8DS (Vacuum Gauge not Included)	NP8DSV (Vacuum Gauge Included)
Power Supply	V/Hz	115V / 60Hz	115V / 60Hz
Flow Rate	CFM	8	8
Ultimate Vacuum	micron	15	15
Pump Design		Dual-Stage, AC Motor	Dual-Stage, AC Motor
Motor Power	HP	3/4	3/4
Inlet Port	in	1/4", 3/8", 1/2" Flare	1/4", 3/8", 1/2" Flare
Oil Capacity	oz	17.6	17.6
Dimension	in	14 x 5.1 x 11.7	14 x 5.1 x 11.7
Weight	lbs	28.6	29.0
Vacuum Gauge		No Vacuum Gauge	NMV1S Vacuum Gauge

The First Vacuum Pump SMART ENOUGH to Check Its Oil Health

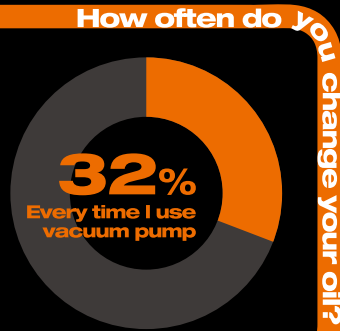


CHANGE OIL ONLY WHEN NEEDED

By relying on real-time assessment provided by the **NP8DS Oil Test Mode** rather than following a vague assumption, technicians can avoid premature oil changes while ensuring they don't overlook contaminated oil.

WASTEFUL PRACTICES

For a long time, there's been a misconception in the field: many believe that vacuum pump oil must be changed every time the pump is used. In fact, our recent survey suggests that over **30% of technicians** are currently following this outdated practice.



PERSONAL SAVINGS

This innovation **reduces oil consumption** for greater efficiency and **saves technicians valuable time** with its oil management solution.

WORLD OF ENVIRONMENTAL SUSTAINABILITY



9,000 CARS

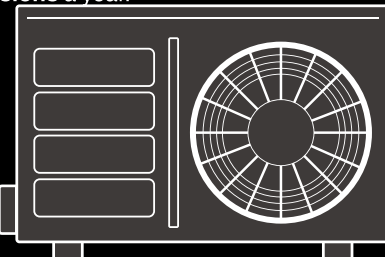
Weight of Oil Saved



120 MILLION MILES OF GAS CAR TRAVEL

Same CO₂ Emission Reduced

When we step back to view the bigger picture, the impact of outdated practices in the HVAC industry becomes clear. With approximately 450,000 HVAC service technicians in the U.S., together we could save over **3.5 million gallons** of vacuum pump oil and reduce over **50,000 tons of CO₂ emissions** a year.



WORK SMARTER. SAVE MORE. GO GREEN.

By choosing NAVAC, you join a community committed to sustainability and innovation, embracing practices that protect future generations.

NP12DM Vacuum Pump



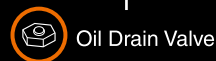
5 micron **12 CFM**



High Performance Oil Mist Filter



Dual-Stage

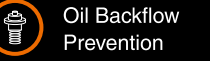


Oil Drain Valve

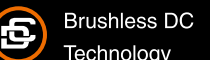


Adjustable Gas Ballast

Lifting Hook



Oil Backflow Prevention



Brushless DC Technology

Fast • Robust • Powerful

Industrial Grade Design

- High quality, super high vacuum
- High evacuation performance

Oil Backflow Prevention

- No system oil contamination during power failure

Brushless DC Technology

- Light
- More efficient

Oil Drain Valve

- Ball valve design, easier to drain

Integrated Dual-Stage Pump

- High vacuum level down to 5 microns

Large Oil Sight Glass

- Better view of oil level

Model	NP12DM	
Power Supply	V/Hz	115V / 60Hz
Flow Rate	CFM	12
Ultimate Vacuum	micron	5
Pump Design	Dual-Stage, DC Motor	
Motor Power	HP	1/2
Inlet Port	in	1/4", 3/8", 1/2" Flare
Oil Capacity	oz	28
Dimension	in	16.3 x 6 x 12.1
Weight	lbs	32

NP12DA1

Ammonia Vacuum Pump

5micron

12CFM



Ammonia



Robust and Corrosion-Resistant

Corrosion Resistant for Ammonia (R-717)

- Special corrosion resistant pump parts
- Stainless steel inlet port

Ignition-Proof Design

- Electronic starter for ignition prevention

Brushless DC Technology

- Light
- More efficient

Oil Drain Valve

- Ball valve design, easier to drain

Industrial Grade Design

- Super high vacuum level down to 5 microns
- Heavy duty for industrial applications

Large Oil Sight Glass

- Better view of oil level

Model		NP12DA1
Power Supply	V / Hz	115V / 60Hz
Flow Rate	CFM	12
Ultimate Vacuum	micron	5
Pump Design		Dual-Stage, DC Motor
Motor Power	HP	1/2
Inlet and Exhaust Flange		KF25
Oil Capacity	oz	28
Dimension	in	16.3×6×12.1
Weight	lbs	32

* For evacuation of sealed HVAC/R systems only. Warranty may void if used for any other purposes.

NRD16T

Industrial Vacuum Pump



Suitable for Heavy Commercial Applications

Industry-Leading Ultimate Vacuum down to 3 Microns

Fast Evacuation with Power and Reliability

Adjustable Gas Ballast Valve

Oil Backflow Prevention

Integrated Cylinder Structure

Forced Oil Circulation

Model		NRD16T
Flow Rate	CFM	12
Ultimate Vacuum	micron	3
Ultimate Vacuum Gas Ballast	micron	6
Water Vapor Capacity	lbs/h	0.7
Motor Power	hp	1
Oil Capacity	Quart	1.6
Inlet and Exhaust Flange		Inlet KF16 Exhaust KF25
Noise Level	dB	58
Net Weight	lbs	98 (with cart)
Dimensions	in	20.5 × 7.4 × 10.7
Accessory		Cart, NPO68 Pump Oil, NOT30B Oil Mist Filter, KF16 to 1/2" Adapter, KF16 & KF25 Clamps

NRD24M

NRD30M

Industrial Vacuum Pump



Powerful • Reliable • Corrosion-Resistant

- Heavy-Duty, Industrial-Grade Design

Oil Backflow Prevention

Corrosion-Resistant

- Suitable for use on ammonia systems

Adjustable Gas Ballast Valve

Forced Oil Circulation

Integrated Cylinder Structure

Model		NRD24M		NRD30M	
Flow Rate	CFM		18		23
Ultimate Vacuum	micron		3		3
Ultimate Vacuum Gas Ballast	micron		6		6
Water Vapor Capacity	lbs/h		1.1		1.1
Motor Power	hp		1.5		1.5
Oil Capacity	Quart		2.1		2.1
Inlet and Exhaust Flange			Inlet KF25 Exhaust KF25		Inlet KF25 Exhaust KF25
Noise Level	dB		58		58
Net Weight	lbs		77		77
Dimensions	in		20.5 × 7.4 × 10.7		20.5 × 7.4 × 10.7
Accessory			NPO68 Pump Oil, KF25 Clamps		

NB1

NBP2

NAPS1

NC2

Battery Power Accessories

NB1

Battery for NP2DLM

- Battery life indicator
- USB output



NBP2

Battery for NP2DLM & NP4DLM

- Battery life indicator
- USB output



NAPS1

Power Supply Adapter



NC2

Battery Charger for NB1 & NBP2



Model	Description	Compatibility	Specification
NB1	Battery Pack	NP2DLM	Li-ion 18V 5.0Ah 90Wh
NBP2	Battery Pack	NP2DLM, NP4DLM	Li-ion 18V 9.0Ah 162Wh
NC2	Charger	NB1, NBP2	Input: 100V-240V~50/60Hz 180W Output: 18V 6A
NAPS1	Power Supply Adapter	NP2DLM, NP4DLM	Input: 100V-240V~50/60Hz, 4.5A, 450VA Output: 21V 20A

NVO1Q
NVO1G

VacShield Premium Vacuum Pump Oil



CART1
NOT30B
NPO68
NF43

Vacuum Pump Accessories

CART1

Cart for NRD16T/24M/30M



NOT30B

Oil Mist Filter for NRD16T/24M/30M



Fueling Pumps With Advanced Tech

Advanced Non-Misting Formulation

- Low volatility
- High resistance to oxidation

Hydro Processed Mineral Oil

- Extremely pure, highly refined
- Excellent lubricity & pump protection at deepest vacuum

Widely Applicable

- Suitable for most vacuum pumps available in the market

Model	NVO1Q	NVO1G
Capacity	1 Liquid Quart	1 Liquid Gallon

NPO68

Industrial Grade Vacuum Pump Oil
1 Liquid Quart



NF43

Premium Oil Mist Filter
For NP12DM,
NP12DA1(for non-ammonia applications)



SK2TP1

SK3TPH1

Smart Probe Kit



SK2TP1
Smart Refrigerant Diagnostics Kit

SK3TPH1
Smart Refrigerant & Air Side Diagnostics Kit

Smart Charging & Comfort Diagnostics

Smart Probes with Digital Display

- Probes are suitable for standalone use
- Works wirelessly with myNAVAC™ App
- High accuracy sensors
- Built-in digital screen

NSP1 Bluetooth Pressure Probes

- Auto VSAT / LSAT calculations through App
- Rechargeable lithium battery
- Easy-to-Switch Knob, suitable for either High (HP) or Low (LP) Side

NST1 NST2 Bluetooth Temperature Clamps

- 1-5/8" opening
- High accuracy thermistor sensor
- Bluetooth connection with NEXUS Digital Manifold Gauge

NSH1 Bluetooth Psychrometers

- Detailed psychrometric datapoints
- Rechargeable lithium battery
- Easy-to-switch knob, suitable for either Side Supply (SP) or Return (RT)

Model	NST1 (Low Side)	NST2 (High Side)	NSP1	NSH1
Description	Bluetooth Temperature Clamp	Bluetooth Temperature Clamp	Bluetooth Pressure Probe	Bluetooth Psychrometer
Measuring Range	-40~257°F (-40~125°C)	-40~257°F (-40~125°C)	-29~725 psi (-1~50 bar)	Humidity: 0~100% RH / Temp: -40~249.8°F
Accuracy	± 2.3°F (± 1.3°C)	± 2.3°F (± 1.3°C)	± 0.5%	Humidity: ±2.0%RH (10 to 90%RH) (at 77°F) ±5.0%RH (<10%RH or >90%RH) (at 77°F) Temperature: ±1.1°F (~4°F~32°F) ±0.9°F (32°F~140°F) ±1.3°F (140°F~248°F)
Resolution	0.1°F	0.1°F	0.01 psi	0.1%RH, 0.1°F
Battery Type	2 x AAA	2 x AAA	Rechargeable Lithium Battery	Rechargeable Lithium Battery
Bluetooth Range	450 ft (150m) line of sight	450 ft (150m) line of sight	164 ft (50m) line of sight	164 ft (50m) line of sight
Unit Weight	5.6 oz	5.6 oz	7.8 oz	7.8 oz

SK2SV1

Smart Refrigerant Flow Control Kit



Automatic Refrigerant Charging & Recovery

NRS2A Smart Refrigerant Scale

- Precise measurement at 0.05% accuracy
- Magnesium alloy weighing platform
- Handheld device included
- Impact resistant design

Model	NRS2A
Maximum load	220 lbs (100 kg)
Accuracy	0.05%FS
Resolution	0.2 oz
Battery Type	4 x AA (Scale), 4 x AAA (Handheld)
Battery Operating Time	150 Hrs (Scale), 65 Hrs (Handheld backlight off)
Bluetooth Range	100 ft (30m) line of sight
Weight	3.3 lbs
Accessory	Carry bag

NSV1 Smart Refrigerant Valve

- Status indicator for Flow, Bluetooth Connection, and Power
- Fast, low-latency operation
- Rechargeable lithium battery
- Impact resistant design, IP54 rating

Model	NSV1
Maximum Working Pressure	551 psi
Ports	1/4" SAE
Operating Environment	14~122°F (-10~50°C)
Storage Temperature	14~122°F (-10~50°C)
Power Supply	Rechargeable 1000mAh Lithium Battery
Rechargeable Battery Operating Time	60 hours
Bluetooth Range	100 ft (30m) line of sight
Dimensions	4.76"H x 3.62"W x 1.87"D
Unit Weight	1.33 lbs
Accessory	Carry bag

NST1 NST2

Bluetooth Temperature Clamps w. Digital Display



Precision Temperature Control

Bluetooth Connectivity

- Work with MyNAVAC™ APP
- Bluetooth connection with NEXUS Digital Manifold Gauge

Accuracy and Ease of Use

- High accuracy thermistor sensor
- One-button operation
- Optional auto power-off after 2 hours
- Digital display for easy reading

Durability and Convenience

- Ip54 rating for dust and water resistance
- Robust design
- Large 1-5/8" opening
- 2 x AAA battery included, up 150 hours battery life

Model	NST1, NST2
Temp Range	-40~257°F (-40~125°C)
Accuracy	± 2.3°F (± 1.3°C)
Resolution	0.1
Sensor Type	Thermistor Pt100
Temperature Units	°F, °C
Max. Tube OD	1-5/8" (42mm)
Battery Type	2 x AAA
Max. Bluetooth	450 ft (150m) line of sight
Range Display Type	TFT
Unit Weight	0.35 lbs
IP Rating	IP54

NSTL

Large Bluetooth Temperature Clamp with Digital Display



Precision Temperature Measurement

Large Opening

- 3/4" to 4-1/8" opening
- For residential, commercial and refrigeration applications

Accuracy and Fast Response

- High accuracy thermoelectric sensor
- Large contact surface

Large Digital Display

- Standalone use as a digital thermometer
- Works with or without myNAVAC™ App
- Quick response with real-time display

Durability and Convenience

- Robust design, IP54 rating for dust and water resistance
- 2 x AAA battery included, up to 150 hours battery life
- Optional auto power-off after 2 hours

Bluetooth Connectivity

- Works wirelessly with myNAVAC™ App
- Works wirelessly with NEXUS Manifold Gauge

Universal Temperature Clamp

- Suitable for either High (HP) or Low (LP) Side

Model	NSTL
Measurement Range	-40~257°F □ -40~125°C □
Accuracy	±2.7°F (±1.5°C)
Resolution	0.1°F
Sensor Type	Thermocouple (Nickel Chromium)
Pipe Size Compatibility	3/4" ~ 4-1/8" OD
Refresh Rate	1 time/second
Bluetooth Range	164 ft (50m) line of sight
Battery Type	2 x AAA
Battery Operating Time	Screen off: >150h; Screen on: >12h
Certification	CE, FCC, RoHS
Wireless Frequency	2.4 GHz
Minimum Device Requirement	BLE4.0 or above, Android 7.0.0 or above, Apple iOS 12.0 or above
Water Resistance	IP54
Unit Weight	7.8 oz
Accessory	Carry bag

NSP1
Bluetooth Pressure Probe with Digital Display



Precision Pressure Measurement

Large Digital Display

- Standalone use as a digital pressure probe
- Works with or without myNAVAC™ App
- Easy and accurate reading

Smart Functions

- Auto VSAT / LSAT calculations through App
- Simultaneous pressure & temperature display
- Pressure decay test

Bluetooth Connectivity

- Works wirelessly with myNAVAC™ App

Universal Temperature Clamp

- Easy-to-Switch Knob, suitable for either High (HP) or Low (LP) Side

Accuracy and Fast Response

- High accuracy sensor
- One-button operation

Rechargeable Lithium Battery

- Up to 150 hours battery life w. battery indicator
- Optional auto power-off after 2 hours

Model	NSP1
Measurement Range	-29~725 psi
Maximum Overload Pressure	1087 psi (7500 kPa)
Accuracy	±0.5% of full range
Resolution	0.01 psi
Sensor Type	Ceramic pressure sensor
Bluetooth Range	164 ft (50m) line of sight
Power Supply	Rechargeable 1200mAh Lithium Battery, Type-C Charging Port
Rechargeable Battery Operating Time	Screen off: >200h; Screen on: >40h
Wireless Frequency	2.4 GHz
Auto Power Off (APO)	2 hours (can be disabled)
Minimum Device Requirement	BLE4.0 or above, Android 7.0.0 or above, Apple iOS 12.0 or above
Unit Weight	7.6 oz
Accessory	Carry bag

NSH1
Bluetooth Psychrometer with Digital Display



Precision Humidity Measurement

Detailed Psychrometric Datapoints

- Simultaneous display of Dry Bulb, Wet Bulb, Dew Point
- Simultaneous display of Relative Humidity, Absolute Humidity and Enthalpy

Large Digital Display

- Standalone use as a digital psychrometer
- Works with or without myNAVAC™ App
- Easy and accurate reading

Bluetooth Connectivity

- Works wirelessly with myNAVAC™ App

Universal Psychrometer

- Easy-to-switch knob, suitable for either Side Supply (SP) or Return (RT)

Accuracy and Fast Response

- High accuracy sensor
- One-button operation

Rechargeable Lithium Battery

- Up to 150 hours battery life w. battery indicator
- Optional auto power-off after 2 hours

Model	NSH1
Measurement Range	Humidity: 0~100% RH / Temp: -40~249.8°F
Measurement Units	°F, °C, % RH (Relative Humidity), °Ftd (Dry Bulb Fahrenheit), °Ctd (Dry Bulb Celsius), Wet Bulb °F, Wet Bulb °C
Accuracy	Humidity: ±2.0%RH (10 to 90%RH) (at 77°F), ±5.0%RH (<10%RH or >90%RH) (at 77°F) Temperature: ±1.1°F (-4°F~32°F), ±0.9°F (32°F~140°F), ±1.3°F (140°F~248°F)
Resolution	0.1%RH, 0.1°F
Sensor Type	Humidity: Capacitive Polymer Film, Temperature: Precision Thermistor
Response Time	10 seconds
Bluetooth Range	164 ft (50m) line of sight
Power Supply	Rechargeable 1200mAh Lithium Battery, Type-C Charging Port
Rechargeable Battery Operating Time	Screen off: >200h; Screen on: >40h
Wireless Frequency	2.4 GHz
Auto Power Off (APO)	2 hours (can be disabled)
Flexible Probe	Length: 7.9", Diameter: 0.39"
Minimum Device Requirement	BLE4.0 or above, Android 7.0.0 or above, Apple iOS 12.0 or above
Unit Weight	7.8 oz
Accessory	Carry bag

NRS2A Smart Refrigerant Scale



Smart Refrigerant Charging & Recovery

Bluetooth Connectivity

- Works wirelessly with myNAVAC™ App and NSV1 smart valve
- Automatic charging & recovery

Integrated Handle Design

- Easy to carry
- Handheld device included

Precision System Charge

- Precise measurement at 0.05% accuracy
- Low latency for real-time readings

Magnesium Alloy Weighing Platform

- 3.3 lbs only

Durability and Convenience

- Impact-resistant design
- Auto power off

Model	NRS2A
Maximum load	220 lbs (100 kg)
Accuracy	0.05%FS
Resolution	0.2 oz
Battery Type	4 × AA (Scale), 4 × AAA (Handheld)
Battery Operating Time	Scale: 150 hours of typical alkaline, Handheld device: 65 hours typical alkaline (backlight off),
Bluetooth Range	100 ft (30m) line of sight
Weight	3.3 lbs
Accessory	Carry bag

NSV1 Smart Refrigerant Valve



Smart Refrigerant Flow Control

Precision Task Management

- Automatic charging & recovery
- Fast, low-latency operation

Bluetooth Connectivity

- Works wirelessly with myNAVAC™ App and NRS2A refrigerant scale

Smart Operation Solenoid Valve

- Status Indicator for Flow, Bluetooth Connection, and Power

Rechargeable Lithium Battery

- Up to 60 hours battery life
- Battery indicator

Durability and Convenience

- Impact resistant design, IP54 rating
- Compact design with folding hook

Model	NSV1
Maximum Working Pressure	551 psi (38bar)
Ports	1/4" SAE
Operating Environment	14~122°F (-10~50°C)
Storage Temperature	14~122°F (-10~50°C)
Power Supply	Rechargeable 1000mAh Lithium Battery, Type-C Charging Port
Rechargeable Battery Operating Time	60 hours
Bluetooth Range	100 ft (30m) line of sight
Dimensions	4.76"H x 3.62"W x 1.87"D (121 x 92 x 48 mm)
Unit Weight	1.33 lbs
Accessory	Carry bag

NMV1S

Premium Micron Vacuum Gauge

This micron gauge uses a Pirani high-precision vacuum sensor to accurately measure vacuum levels. Digital display provides a comprehensive view of vacuum conditions. It features a rechargeable battery and compact design. When reaching the preset vacuum level, it will buzz as a reminder. When the vacuum level increases from the decay target, it will buzz rapidly and flash backlight to warn of leaks.

Leading Technology, Superior Quality, Best Experience.
Empowering You to Work Smarter



Smart Measurement

Pirani Vacuum Sensor

- Professional grade
- Precise

Rechargeable Battery

- Long battery life

Large Backlit Display

- Easy-to-read large digital display
- Backlit for clarity
- Auto power off

High Pressure Protection

- 500 psi maximum pressure

Buzzing Alert

- Vacuum level reminder
- Vacuum leakage warning
- Decay target and decay duration

Compact Design

- Easy to carry

Model	NMV1S
Maximum Pressure	500 psi (34.5 bar)
Range	0~25000 microns, 0~3300 Pa, 0~33.3 mBar, 0~25 mmHg
Resolution	0.01 micron (<10 microns), 0.01 Pa (<10 Pa), 0.001 mBar, 0.001 mmHg
Accuracy	15-1000 microns: ±5% of reading (at 68°F)
Operating Temperature	32~122°F(0~50°C)
Unit	Pa, mBar, mmHg, microns
Sensor	Pirani sensor
Battery	2000 mAh Li-ion
Weight	6.2 oz
Accessory	Angled Stem, Storage Bag

NMV1

Micron Vacuum Gauge

It uses a Pirani high-precision vacuum sensor to accurately measure vacuum levels. Digital display offers a comprehensive view of vacuum conditions. When reaching the preset vacuum level, it will buzz as a reminder. When the vacuum level increases from the preset value, it will buzz rapidly and flash the backlight to warn of leaks.

Leading Technology, Superior Quality, Best Experience.
Empowering You to Work Smarter



Precise Measurement

Pirani Vacuum Sensor

- Professional grade
- Precise

Ergonomic Design

- Easy to carry

Large Backlit Display

- Easy-to-read large digital display
- Backlit for clarity
- Auto power off

Buzzing Alert

- Vacuum level reminder
- Vacuum leakage warning
- Programmable vacuum target

Model	NMV1
Operation Pressure	< 14.7 psi
Range	0~10000 Pa, 0~100 mBar, 0~75 mmHg, 0~75000 microns
Resolution	0.01 (10 Pa), 0.0001 (10 mBar), 0.0001 (10 mmHg), 1 (30000 microns)
Accuracy	15-750 micron: ±5% of reading (at 68°F)
Operating Temperature	32~122°F(0~50°C)
Unit	Pa, mBar, mmHg, microns
Sensor	Pirani sensor
Buzzer alarm	90 dB, shut down after 10 seconds
Weight	4.5 oz
Accessory	Angled Stem, Storage Bag

NVR1

Valve Core Removal Tool (VCRT)



Evacuation & Recovery

2 sizes in 1 tool



TESTING TOOLS
& INSTRUMENTS

Fast Evacuation

For Use With Both 1/4" and 5/16" SAE

Designed for High-Pressure Refrigerants Including R410a

Vacuum Rated to 20 Microns

Metal Handle for Durability

Model	NVR1
Accessory	VR01005 O Ring (3pk)

NVR2

Valve Core Removal Tool (VCRT)

2 sizes in 1 tool



TESTING TOOLS
& INSTRUMENTS

Best VCRT Gets Better!

2 Sizes in 1 Tool

- 1/4" and 5/16" fittings in one tool
- Convenient and budget-friendly

Built to Last

- Designed for high-pressure refrigerants including R410A

Vacuum Rated to 20 Microns

- Robust O-Rings for tough applications
- Replacement O-Rings included

Modern Finish for Sleek Aesthetic

- Metal handle for durability

Model	NVR2
Accessory	3 pieces of O-Rings

NMT1000

Thermal Imaging Camera

The NAVAC NMT1000 is designed for HVAC applications. Equipped with a 160x120 resolution thermal detector, it provides the technician with fast and accurate thermal imaging of the entire field of the measurement vs. just spot temperature. It highlights the highest and lowest temperature spots in the field to assist with fast diagnosis and troubleshooting of HVAC systems.

Leading Technology, Superior Quality, Best Experience.
Empowering You to Work Smarter



Troubleshoot HVAC Systems Through A New Lens

High-Quality Imaging

- Highly sensitive vanadium oxide detector
- Distinctive thermal vision of the target

Quick Temperature Measurement

- Covers the entire field of the target
- Highlight hot and cold spots

25 Hz Fast Refresh Frequency

- Smooth video and measurements
- Captures moving targets

Long Battery Life

- Up to 8 hours of continuous run time

Light Weight

- Compact design, easy to carry

Other Features

- Auto temperature range
- Laser pointer
- Quick start in 8 seconds
- Store and export images

Model	NMT1000
Thermal Resolution	160 × 120 (19,200 pixels)
Refresh Frequency	25 Hz
Display	320 × 240 pixels, 2.4" color LCD
Temperature Range	-4°F ~ 1022°F (-20 °C - 550 °C)
Measuring Accuracy	± 3.6 °F (± 2 °C) or ± 2%
Thermal Sensitivity (NETD)	< 40 mK
Battery Life	8 hours
Measurement Presets	Center Spot, Hot Spot, Cold Spot, Off

NMT1200

Thermal Imaging Camera

The NAVAC NMT1200 is designed for HVAC applications. Equipped with a 96x96 resolution thermal detector and Ultra IR technology, it provides the technician with fast and accurate thermal imaging of the entire field of the measurement vs. just spot temperature. It highlights the highest and lowest temperature spots in the field to assist with fast diagnosis and troubleshooting of HVAC systems.

Leading Technology, Superior Quality, Best Experience.
Empowering You to Work Smarter



Troubleshoot HVAC Systems Through A New Lens

High-Quality Imaging

- Highly sensitive vanadium oxide detector
- Distinctive thermal vision of the target

Quick Temperature Measurement

- Covers entire field of the target
- Highlights hot and cold spots

25 Hz Fast Refresh Frequency

- Smooth video and measurements
- Captures moving targets

Long Battery Life

- Up to 8 hours of continuous run time

Light Weight at 10.2 oz

- Compact design
- Easy to carry

Other Features

- Auto temperature range
- Laser pointer
- Quick start in 8 seconds
- Store and export images

Model	NMT1200
Ultra IR	240 × 240 (57,600 pixels)
IR Resolution	96 × 96 (9,216 pixels)
Image Frequency	25 Hz
Display	240 × 320 Resolution, 2.4" LCD Screen
Temperature Range	-4°F~1,022 °F (-20~550°C)
Accuracy	Max (3.6°F/±2°C/, ±2%) at ambient temperature 77°F (25°C) and object temperature above 32°F (0°C)
Thermal Sensitivity (NETD)	< 50 mK (@ 25 °C, F#=1.0)
Battery Life	Approx. 8 hours
Measurement Presets	White Hot, Black Hot, Rainbow, Ironbow, Red Hot, Fusion

NRS2i01

Wireless Refrigerant Scale



Precise Charging

Wireless Bluetooth Control

- More convenient
- Auto power off

Large Backlit Display

- Large screen digital display, better readability

Precision Sensor

- Precise measurements
- Accuracy 0.05%

Integrated Handle Design

- Convenient hide-away storage for hand-held device

Magnesium Alloy Weighing Platform

- 3.3 lbs only, easy to carry

Model		NRS2 01
Range	lbs	220
Resolution	oz	0.2
Accuracy	%	0.05%
Power		4 × AA (scale), 4 × AAA (controller)
Dimension	in	8.25 × 10.2
Weight	lbs	3.3
Accessory		Storage Bag

NRS3i01

Wireless Refrigerant Scale, Large Weighing Pan



Precise Charging

Wireless Bluetooth Control

- More convenient
- Auto power off

Large Backlit Display

- Large screen digital display, better readability

Precision Sensor

- Precise measurements
- Accuracy 0.05%

Integrated Handle Design

- Convenient hide-away storage for hand-held device

Large Aluminum Weighing Platform

- Suitable for larger size refrigerant cylinders
- Durable and highly reliable

Model		NRS3 01
Range	lbs	265
Resolution	oz	0.35
Accuracy	%	0.05%
Power		4 × AA (scale), 4 × AAA (controller)
Dimension	in	10.6 × 12.6
Weight	lbs	10.3
Accessory		Carry Case

NML1

Refrigerant Leak Detector

Featuring a semiconductor sensor and a high-performance rechargeable lithium battery, it is precise, durable and easy to carry.

Leading Technology, Superior Quality, Best Experience.

Empowering You to Work Smarter



A2L Compatible

A2L compatible excluding HFOs and blends with >50% HFOs.



Accurate Detection

Semiconductor Sensor

- Precise measurement
- Extended service life

Lithium Battery

- Rechargeable

Ergonomic Design

- Easy to carry

Sniffing Fan

- 2 CFM ball bearing fan for very small leaks

Model	NML1
Refrigerants	CFC, HCFC, HFC refrigerants
Minimum of leakage	≤0.1 oz / year (R-134a)
Response time	≤3 s (depending on the size and location of leak)
Battery life	≥8 hours
System pressure	≥50 psi
Sensor life	≥1 year under normal usage (1500 h)
Length of probe	15.7 in
Weight	0.77 lbs
Calibration	Auto
Fan	2 CFM
Accessory	Carry Case

NMC1

Digital Clamp Meter

NAVAC NMC1 Digital Clamp Meter has a high-precision smart chip for a quick and accurate measurement of electrical current. Its adjustable 1-1/8" jaw makes it easy to get around large conductors. Easy to read with a large backlit LCD. The compact design is ideal for tight spaces.

Leading Technology, Superior Quality, Best Experience.

Empowering You to Work Smarter



Simple • Solid

High Precision Chip

- Precise measurement

Backlit LCD

- Easy to read large display

1-1/8" Jaw

- Suitable for large conductors

Compact Design

- Ideal for tight spaces

Model	NMC1
Max Measurement Voltage	600V
Max Measurement AC Current	400 A
Max Measurement Capacitance	4000 μF
Temperature Measurement Range	-40°F~1832°F (-40°C~1000°C)
Weight	9.6 oz
Accessory	Test Leads, Type K Temperature Probe, Storage Bag

NMT300

Infrared Thermometer

NAVAC NMT300 determines surface temperature by measuring the infrared energy of target surface. Its low power consumption design allows for a long-lasting operation. High-precision infrared sensor is quick and accurate in getting surface temperature.

Leading Technology, Superior Quality, Best Experience.
Empowering You to Work Smarter



Easy to Use

Precision Infrared Sensor

- Rapid response, accurate measurement

Large-Aperture Silicon Mirror

- Long-distance reach
- Wide measuring range

One-Key Operation

- Convenient, easy to use

Backlit LCD

- Easy to read display

Model	NMT300
Emissivity	0.10~1.00 adjustable
Temperature Range	-25.6°F~752°F (-32°C~400°C)
Max Measuring Accuracy	±2%
Response Time	500 mS
Debug Mode	Single-process debugging

N2D72

Flex72 Manifold Gauge with Digital Display



One Gauge, Seventy-Two Solutions

Ideal Alternative to Multiple Gauges

- One gauge for 72 refrigerants, no need for multiple gauges
- Save money, save space, save time

Accuracy

- Class 0.4 accuracy, over 100% improvement vs. analog gauges

Aluminum Body with 1/4 Turn Ball Valve

- Reliable, efficient and durable
- Better work experience

Digital Display

- Easy to read
- Auto power off

Impact-Resistant

- Impact-resistant design
- Durable rubber cover

Folding Hook

- Hidden hook design, easy to transport

Model	N2D72	
Refrigerant Type		R-11, R-12, R-13, R-22, R-23, R-32, R-113, R-114, R-115, R-116, R-123, R-124, R-125, R134a, R-236fa, R-245fa, R-290, R-401A, R-401B, R-402A, R-402B, R-403B, R-404A, R-406A, R-407A, R-407B, R-407C, R-408A, R-409A, R-410A, R-413A, R-414A, R-414B, R-416A, R-417A, R-417C, R-420A, R-421A, R-421B, R-422A, R-422B, R-422C, R-422D, R-424A, R-427A, R-428A, R-434A, R-437A, R-438A, R-448A, R-449A, R-450A, R-452A, R-452B, R-453A, R-454B, R-458A, R-500, R-501, R-502, R-503, R-507A, R-508B, R-513A, R-600, R-600a, R-601, R-601A, R-744*, R-1233zd, R-1234yf, R-1234ze *Maximum pressure: 600 Psi (4200 kPa)
Pressure Range	psi	-30 inHg to 720 psi
Accessory		Carry Case

N2DX

Flex-X Manifold Gauge with HD Color Graphic Interface

PATENT PENDING





Industry-First HD Color Graphic Manifold Gauge

Cutting-Edge Graphic User Interface (UI)

- Convert data into visuals with enhanced UI
- Visual impact and animation
- Outstanding clarity and readability

Rechargeable Lithium Battery

- Up to 100 hours battery life
- Auto power off (APO)

Ideal to Replace Multiple Analog Gauges

- One gauge for 72 refrigerants
- Save money, save space, save time

Aluminum Body with 1/4 Turn Ball Valve

- Impact-resistant rubber cover
- IP54 rating

Digital and Accurate

- Class 0.4 accuracy
- Quick response with real-time display
- Precision at a glance

Easy to Use

- One-knob operation
- Hidden hook design, easy to transport

Model	N2DX
Refrigerant Type	R-11, R-12, R-13, R-22, R-23, R-32, R-113, R-114, R-115, R-116, R-123, R-124, R-125, R134a, R-236fa, R-245fa, R-290, R-401A, R-401B, R-402A, R-402B, R-403B, R-404A, R-406A, R-407A, R-407B, R-407C, R-408A, R-409A, R-410A, R-413A, R-414A, R-414B, R-416A, R-417A, R-417C, R-420A, R-421A, R-421B, R-422A, R-422B, R-422C, R-422D, R-424A, R-427A, R-428A, R-434A, R-437A, R-438A, R-448A, R-449A, R-450A, R-452A, R-452B, R-453A, R-454B, R-458A, R-458B, R-500, R-501, R-502, R-503, R-507A, R-508B, R-513A, R-600, R-600a, R-601, R-601a, R-744*, R-1233zd, R-1234yf, R-1234ze *Maximum pressure: 1087 psi (7500 kPa)
Pressure Range	-29.0 inHg to 720 psi
Power Supply	Rechargeable 3000mAh Lithium Battery
Accessory	Carry Case

Reimagining P/T Display

Traditional analog gauges provide visual feedback but lack precision, while newer digital gauges offer accuracy but lose intuitive movement. With an HD color graphic interface that offers digital dials alongside numerical readings, **Flex-X** combines the best of both worlds, delivering precise readings and crisp, high-contrast real-time insights.

Save Money & Space

Traditional gauges require separate dials for each refrigerant, leading to high costs and bulky toolkits. **FLEX-X** solves this problem with a digital dial displaying 72 refrigerants in one device. At \$229, it replaces multiple sets of \$80–\$180 analog gauges, saving money, reducing clutter, and improving efficiency.

Bridging the Gap

Many technicians switched from analog gauges to advanced digital manifolds, but these are costly and sometimes complex to use. **FLEX-X** bridges the gap. When an advanced digital gauge is unnecessary, **FLEX-X** delivers a streamlined, intuitive solution—offering the clarity and ease of interpretation without the complexity.



NX1 NX1V NEXUS Digital Manifold Gauge



Smart and Precise

Smart and Wireless

- Work with *myNAVAC™* App
- Bluetooth connections with temp clamps & micron gauge (sold separately)

Aluminum Body w/ 1/4 Turn Ball Valve

- Reliable, efficient and durable
- Better work experience

Multi-Operation Modes

- Manifold mode with SH/SC display
- Pressure Test mode
- Evacuation mode

Folding Hook

- Hidden hook design
- Easy to transport

Digital and Accurate

- Class 0.4 accuracy with digital display
- Precision at a glance

Impact-Resistant

- Impact-resistant design
- Durable rubber cover

Model	NX1	NX1V
Refrigerant Type	R-11, R-12, R-13, R-22, R-23, R-32, R-113, R-114, R-115, R-116, R-123, R-124, R-125, R134A, R-236fa, R-245fa, R-290, R401A, R-401B, R-402A, R-402B, R-403B, R-404A, R-406A, R-407A, R-407B, R-407C, R-408A, R-409A, R-410A, R-413A, R-414A, R-414B, R-416A, R-417A, R-417C, R-420A, R-421A, R-421B, R-422A, R-422B, R-422C, R-422D, R-424A, R-427A, R-428A, R434A, R-437A, R-438A, R-448A, R-449A, R-450A, R-452A, R-452B, R-453A, R-454B, R-458A, R-500, R-501, R-502, R-503, R507A, R-508B, R-513A, R-600, R-600a, R-601, R-601a, R-744*, R-1233zd, R-1234yf, R-1234ze Firmware can be updated at NAVAC website or with <i>MyNAVAC™</i> App *Maximum pressure: 600 Psi (4200 kPa)	
Pressure Range	psi	-30 inHg to 720 psi
Bluetooth Range	feet	260 ft (80m) line of sight
Power Supply		Rechargeable Li-ion Battery
Accessory		Bluetooth Temperature Clamps NST1 (Low Side), NST2 (High Side), Charging Cable, Carry Case
		NMV1S Micron Gauge in addition to the NX1 Kit

NX4 NX4V NEXUS Digital Manifold Gauge



Smart and Precise

Smart and Wireless

- Work with *myNAVAC™* App
- Bluetooth connections with temp probes & micron gauge (sold separately)

Digital and Accurate

- Class 0.4 accuracy with digital display
- Precision at a glance

Multi-Operation Modes

- Manifold mode with SH/SC display
- Pressure Test mode
- Evacuation mode

Aluminum Body w/ 1/4 Turn Ball Valve

- Reliable, efficient and durable
- Better work experience

4 Valves

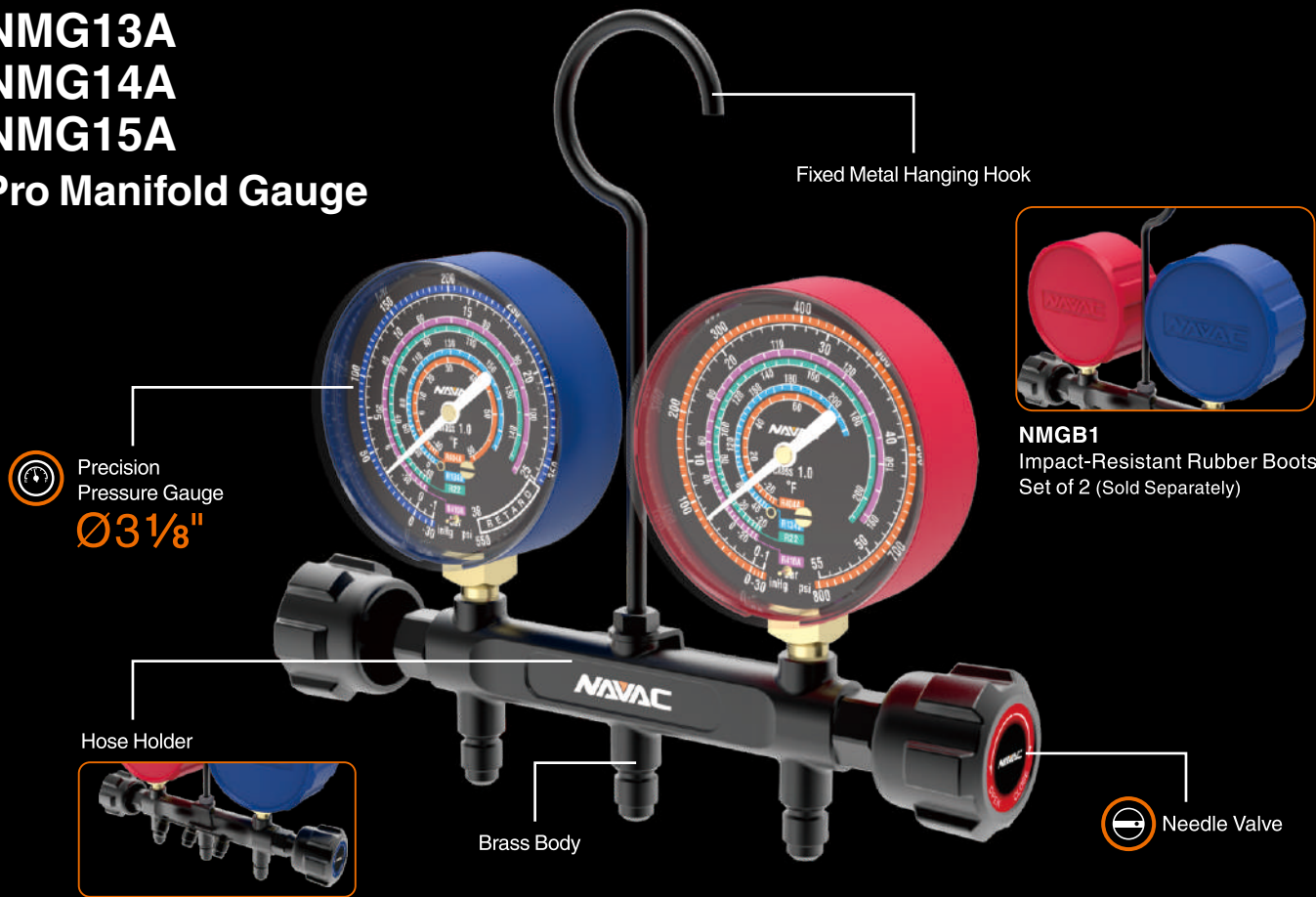
- Includes a 3/8" vacuum port for fast evacuations
- Single setup for multi-task operations

Easy to Use

- Folding hook
- Impact-resistant rubber cover

Model	NX4 (Vacuum Gauge Not Included)	NX4V (Vacuum Gauge Included)
Refrigerant Type	R-11, R-12, R-13, R-22, R-23, R-32, R-113, R-114, R-115, R-116, R-123, R-124, R-125, R134a, R-236fa, R-245fa, R-290, R-401A, R-401B, R-402A, R-402B, R-403B, R-404A, R-406A, R-407A, R-407B, R-407C, R-408A, R-409A, R-410A, R-413A, R-414A, R-414B, R-416A, R-417A, R-417C, R-420A, R-421A, R-421B, R-422A, R-422B, R-422C, R-422D, R-424A, R-427A, R-428A, R-434A, R-437A, R-438A, R-448A, R-449A, R-450A, R-452A, R-452B, R-453A, R-454B, R-458A, R-500, R-501, R-502, R-503, R-507A, R-508B, R-513A, R-600, R-600a, R-601, R-601a, R-744*, R-1233zd, R-1234yf, R-1234ze *Maximum pressure: 1087 psi (7500 kPa) Firmware can be updated at NAVAC website or with <i>MyNAVAC™</i> App	
Ports	(1) 3/8" sae for evacuation; (3) 1/4" sae for suction line, liquid line, and refrigerant recovery/charging	
Maximum Manifold Pressure	1087 psi (7500 kPa)	
Bluetooth Range	260 ft (80m) line of sight	
Power Supply	Rechargeable 3000mAh lithium battery	
Accessory	Bluetooth Temperature Clamps NST1 (Low Side), NST2 (High Side), Charging Cable, Carry Case	NMV1S Vacuum Gauge in addition to the NX4 Kit

NMG11A
NMG12A
NMG13A
NMG14A
NMG15A
Pro Manifold Gauge



Simple • Reliable

Reliable Brass Body with Needle Valve

- Reliable, efficient and durable
- Better work experience

Accurate

- Precision pressure gauge with Class 1.0 accuracy

Easy Reading

- Ø 3-1/8" large dial for improved readability
- Color-coded for easy reading

Other Features

- Illuminating, glow in the dark
- Hose holder
- Fixed metal hanging hook

Model		NMG11A	NMG12A	NMG13A	NMG14A	NMG15A
Refrigerant Type		R-410A R-22 R-134a R-404A	R-454B R-32 R-410A R-22 A2L Compatible	R-32 R-454B R-22 A2L Compatible	R-22 R-410A R-404A	R-134a R-404A R-410A
Gauge Diameter	in	Ø 3-1/8				
Pressure Range	psi	-30 inHg to 800 psi -30 inHg to 500 psi				
Accessory		Carry Case, Rubber Boots *Sold separately under NMGB1				

N2A4
N2A4B
N2A4C
N2A4D
N2A4E
Pro Plus Manifold Gauge



Precise • Impact-Resistant

Aluminum Body with 1/4 Turn Ball Valve

- Reliable, efficient and durable
- Better work experience

Accurate

- Precision pressure gauge with Class 1.0 accuracy

Impact-Resistant

- Impact-resistant design
- Durable rubber cover

Folding Hook

- Hidden hook design, easy to transport

Easy Reading

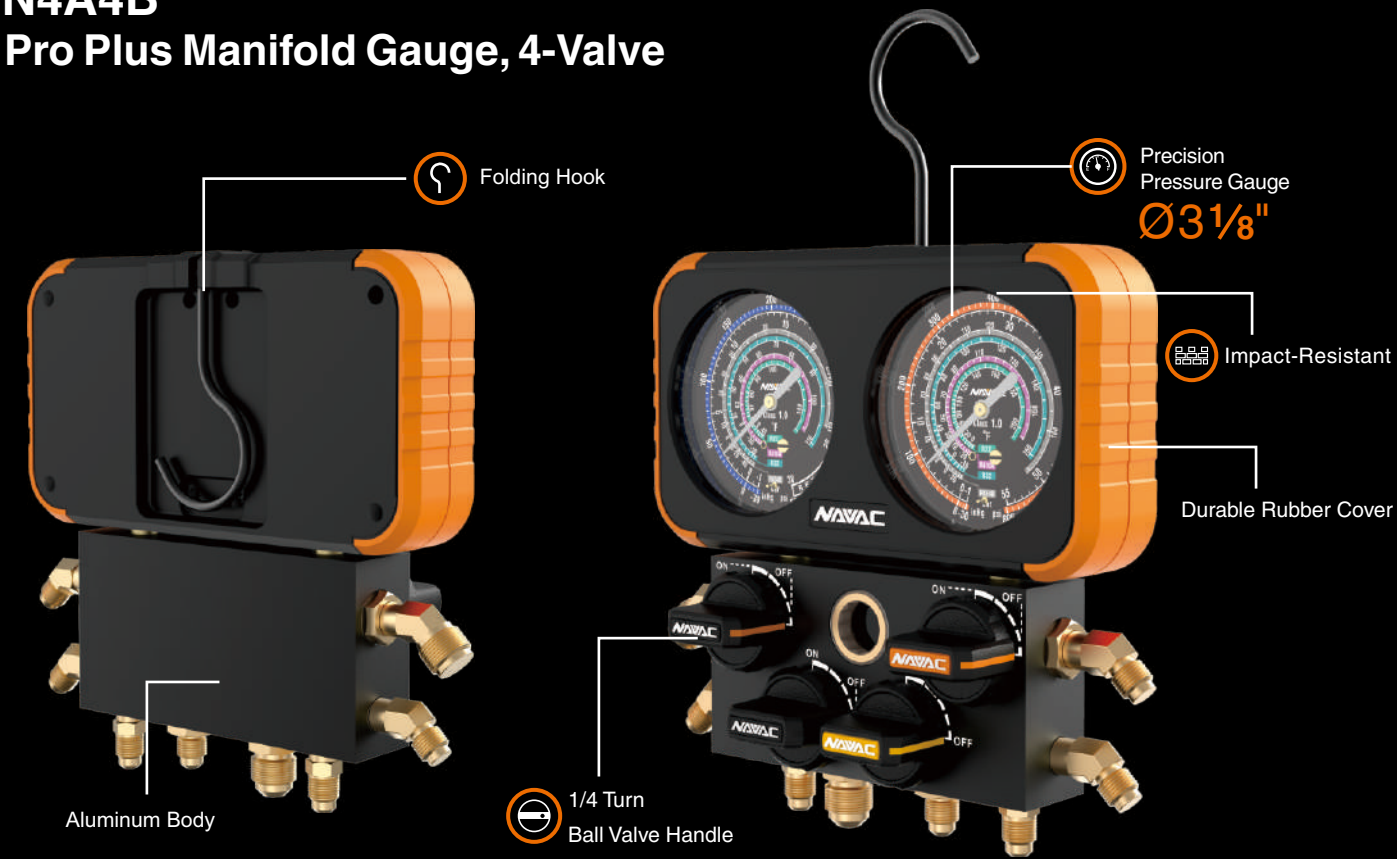
- Ø 3-1/8" large dial for improved readability
- Color-coded for easy reading

Other Features

- Illuminating, glow in the dark
- Hose holder

Model		N2A4	N2A4B	N2A4C	N2A4D	N2A4E
Refrigerant Type		R-410A R-22 R-134a R-404A	R-454B R-32 R-410A R-22 A2L Compatible	R-32 R-454B R-22 A2L Compatible	R-22 R-410A R-404A	R-134a R-404A R-410A
Gauge Diameter	in	Ø 3-1/8				
Pressure Range	psi	-30 inHg to 800 psi -30 inHg to 500 psi				
Accessory		Carry Case				

N4A4H
N4A4
N4A4B
Pro Plus Manifold Gauge, 4-Valve



Precision • Impact-Resistant

- Accurate**

 - Precision pressure gauge with Class 1.0 accuracy

Impact-Resistant

 - Impact-resistant design
 - Durable rubber cover
- Aluminum Body with 1/4 Turn Ball Valve Handle**

 - Reliable, efficient and durable
 - Better work experience

Folding Hook

 - Hidden hook design, easy to transport
- 4-Refrigerants for Wider Applications**

 - Ø 3-1/8 large dial for easy reading
 - Commonly used refrigerants on outer rings

4 Valve

 - Easy to use

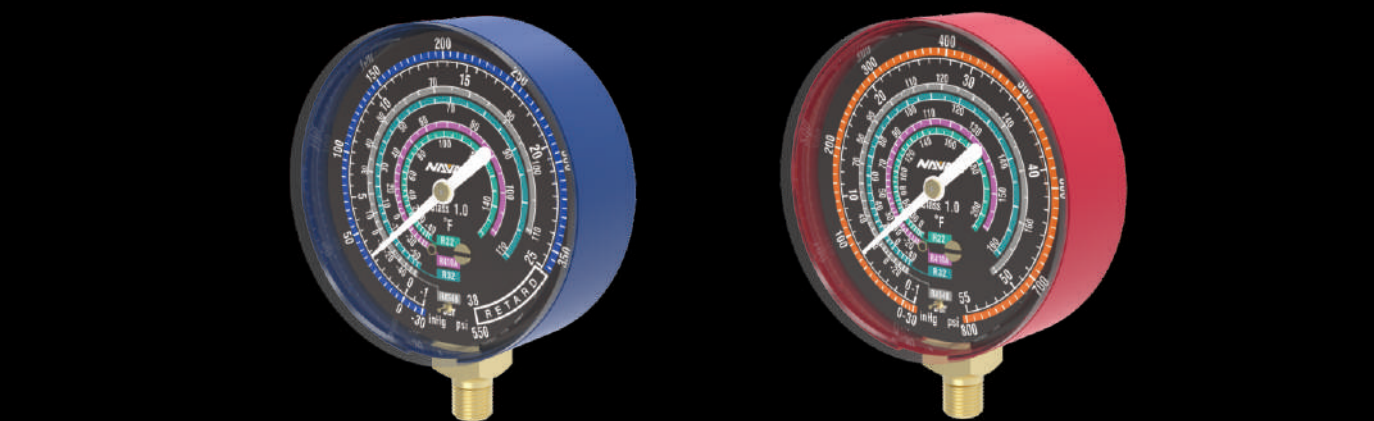
Model	N4A4H	N4A4	N4A4B
Refrigerant Type	R-410A, R-22, R-134a, R-404A	R-410A, R-22, R-134a, R-404A	R-454B, R-32, R-410A, R-22
Gauge Diameter	in Ø 3-1/8	in Ø 3-1/8	in Ø 3-1/8
Pressure Range	psi -30 inHg to 800 psi -30 inHg to 500 psi	psi -30 inHg to 800 psi -30 inHg to 500 psi	psi -30 inHg to 800 psi -30 inHg to 500 psi
Hose	in Black 3/8" - 3/8" Red 1/4" - 1/4" Yellow 1/4" - 1/4" Blue 1/4" - 1/4"	/	/
Hose Length	ft 4x5'	/	/
Accessory	Carry Case	Carry Case	Carry Case

NMGB1
Manifold Gauge Boots
ø3-1/8"



Part No.	Diameter	Qty
NMGB1	ø3-1/8"	One pair (2 pieces)

Manifold Gauge Head



Part No.	Refrigerant Type	Specification	Gauge Diameter
NMH11H	R-410A, R-22, R-134a, R-404A	High Side	ø3-1/8"
NMH11L	R-410A, R-22, R-134a, R-404A	Low Side	
NMH12H	R-454B, R-32, R-410A, R-22	High Side	
NMH12L	R-454B, R-32, R-410A, R-22	Low Side	
NMH13H	R-32, R-454B, R-22	High Side	
NMH13L	R-32, R-454B, R-22	Low Side	
NMH14H	R-22, R-410A, R-404A	High Side	
NMH14L	R-22, R-410A, R-404A	Low Side	
NMH15H	R-134a, R-404A, R-410A	High Side	
NMH15L	R-134a, R-404A, R-410A	Low Side	

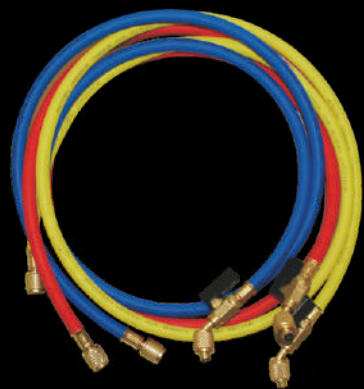
NH5S

Charging Hose Set w/o Ball Valve



NH5SC

Charging Hose Set with Ball Valve



NH5R NH5B NH5Y NH5L

Individual Charging Hose w/o Ball Valve



NH5CR NH5CB NH5CY

Individual Charging Hose with Ball Valve



NH5L

A2L
Compatible

1/4" Color Hoses, 5 Ft Long

Main Features for All Models

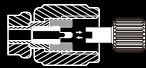
- Suitable for R-410A, R-134a, R-22 and other refrigerants
- 1/4" SAE fittings with 45° bend on one end
- Leak-proof eight-sided crimp
- 800 psi working pressure, 4000 psi burst pressure
- Universal, replaceable gasket
- Adjustable depressor

Ball Valve Models

- Ball valve for reduced refrigerant loss
- Metal valve handle

NH5L

- Reverse threaded for A2L



The valve core depressor can be adjusted up or down to optimize its access to valve core. Use a valve core depressor adjuster to turn the depressor. To lower, turn clockwise; to raise, turn counterclockwise.



Model		NH5S	NH5R	NH5B	NH5Y	NH5L	NH5SC	NH5CR	NH5CB	NH5CY
Color		Red, Yellow, Blue	Red	Blue	Yellow	Orange	Red, Yellow, Blue	Red	Blue	Yellow
Quantity	pc	3	1	1	1	1	3	1	1	1
Ball Valve		Without ball valve					With ball valve			
Pressure Scale	psi	0-800 psi								
Length	ft	5								
Connector	in	1/4" - 1/4"								

NHR38AA NHR38AB

Big Boy Recovery Hoses



NHB1 NHB2

Big Boy High-Flow Hoses



Vacuum rated to
20 microns

NH38BB

Big Boy Evacuation Hoses



NH34AB NH34AC

Big Boy Evacuation Hoses



Vacuum rated to
20 microns

Fast & Efficient

- Large diameter for optimized evacuation and recovery
- High-grade low permeation hoses
- Vacuum rated to 20 microns

Model		NHR38AA	NHR38AB	NH38BB	NHB1	NHB2	NH34AB	NH34AC
Length	feet	6'	6'	5'	6'	6'	3'	3'
Diameter	in	3/8"	3/8"	3/8"	1/2"	1/2"	3/4"	3/4"
Fitting		1/4" to 1/4"	1/4" to 3/8"	3/8" to 3/8"	1/4" to 3/8"	1/4" to 1/2"	1/4" to 3/8"	1/4" to 1/2"
Burst Pressure	psi	2300		3200		290		
Working Pressure	psi	460		640		72.5		

NEVK1
NEVK2
NEVK3
NEVK4
Rapid Evacuation Kit



Rapid Evacuation

Big Boy High-Flow Evacuation Hoses, 6' Long

- 1/2" large diameter for fast evacuation
- 4-layer construction for low permeation
- 3200 psi burst pressure, 640 psi working pressure
- Vacuum rated to 20 microns

NVR1 Valve Core Removal Tool

- For use with both 1/4" and 5/16" SAE
- Vacuum rated to 20 microns
- Designed for high-pressure refrigerants including R410a
- Metal handle for durability

NMV1 Micron Vacuum Gauge

- Pirani vacuum sensor
- Large backlit display
- Buzzing alert
- Ergonomic design

Model	NEVK1	NEVK2	NEVK3	NEVK4
Description	Rapid Evacuation Kit, Pro Series		Rapid Evacuation Kit, Pro Plus	
Items	Quantity		Quantity	
NHB1 Evacuation Hose, 3/8" to 1/4" Fitting	1	-	1	1
NHB2 Evacuation Hose, 1/2" to 1/4" Fitting	-	1	1	1
NVR1 Valve Core Removal Tool	1	1	2	1
NMV1 Micron Vacuum Gauge	-	-	1	-

PRO

SERIES

NCA10
Mini Condensate Pump



Ultra-Quiet & Durable

Ultra-Quiet Design

- Durable diaphragm pump
- Brushless DC motor

Clogging Prevention

- Cleanable & replaceable built-in filter
- Large opening for condensate flow

Easy to Use

- Snap-on/off cover, easy to install & maintain
- 5' vinyl tube included
- Anti-siphon

Compact Design

- Easy to hide inside the unit

Built-In Water Level Safety Sensor

- Highly reliable electrode sensor
- Three-piece sensor for overflow protection

Model	NCA10
Power Supply	100-240V/50-60 Hz
Flow Rate	10.6 GPH
Max. Lift	33 feet
Water Tank Capacity	1.69 fl oz. (50ml)
Noise Level at 1 meter	21 dBA
Applicable Ambient Temperature	32~122°F
Accessories	5' Vinyl Hose, Anti-Siphon Accessory, Installation Kit

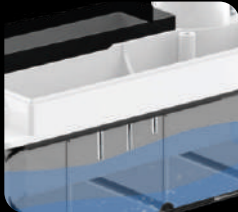
NCB10
Condensate Pump



21dB ≈ Rustling Leaves



Electrode Water Level Sensor



Ultra-Quiet & Sleek

Ultra-Quiet Design

- Durable diaphragm pump
- Brushless DC motor
- Noise absorption foam also prevents water condensation

Compact & Sleek

- Modern finish to match mainstream AC design
- Easy-to-hide & detachable power cable

Easy Maintenance

- Snap-on/off pan and cover
- Large opening for condensate flow

Built-In Water Level Safety Sensor

- Highly reliable electrode sensor
- Three-piece sensor for overflow protection

Easy to Use

- Built-in level
- Anti-siphon
- LED function light

Large Water Tank Capacity

- Minimizing runtime & extending life
- Energy saving

Model	NCB10
Power Supply	100-240V/50-60 Hz
Flow Rate	10.6 GPH
Max. Lift	39 feet
Water Tank Capacity	6.76 fl oz. (200ml)
Noise Level at 1 meter	21 dBA
Applicable Ambient Temperature	32~122°F
Accessories	Detachable Power Cable, Installation Kit

PL1
LED Penlight

300 Lumens



Brightness in Your Palm

Brightness

- Extra-bright at 300 lumens
- Long-distance illumination up to 330 feet

Rechargeable Battery

- Rechargeable lithium battery included
- Up to 2 hours runtime
- AAA battery compatibility as an alternative

Multiple Lighting Modes

- 3 Lighting Modes: High, Low, Strobe
- Adjustable lighting for customized brightness

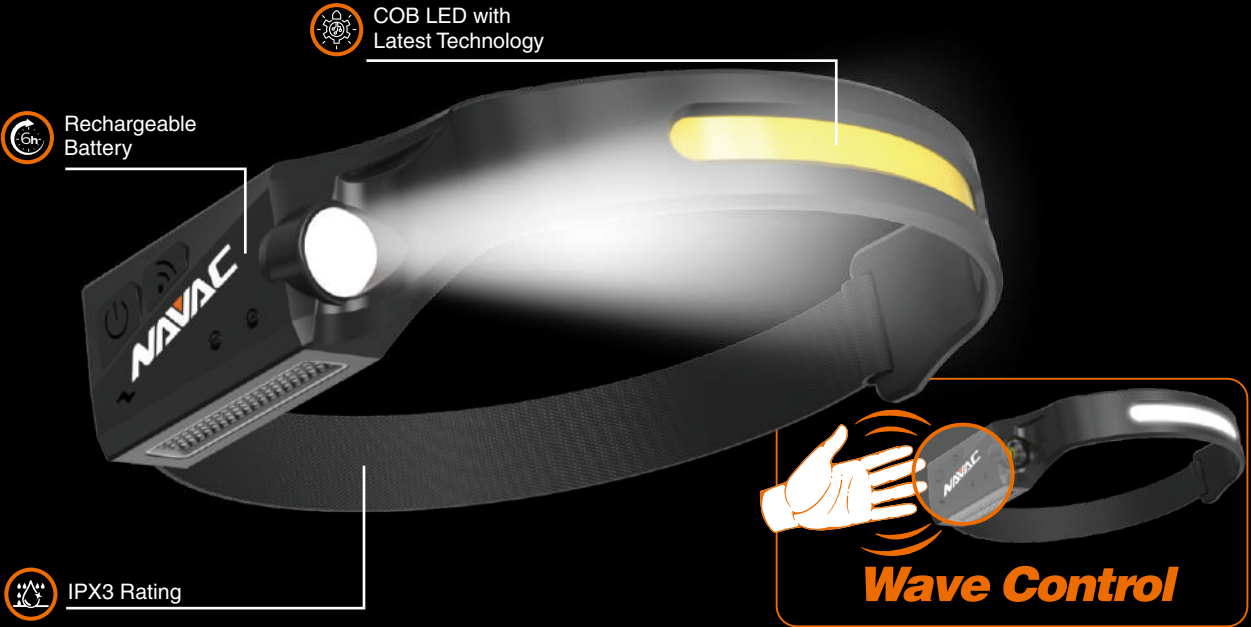
Convenience and Portability

- 2-way clip
- Hidden Type-C charging port
- IP44 rating

Model	Unit	PL1
Modes		High, Low, Strobe
Light Output	Lumen	300
Rechargeable Battery Spec	mAh, V	350, 3.7
Range	Feet	330
Material		Aluminum
Weatherproof Rating		IP44
Working Time		1 Hour (High Mode), 2 Hours (Low Mode)
Dimensions	in	4 x 0.6 x 0.6
Weight	oz	1.23

PL2
LED Headlamp

350 Lumens



Versatile Way to Light Your Path

- Brightness**

 - Extra-bright at 350 lumens
 - Long-distance illumination up to 330 feet
- Rechargeable Battery**

 - Rechargeable lithium battery included
 - Up to 6 hours runtime
- Multiple Lighting Modes**

 - 5 Lighting Modes: High (COB), Low (COB), High (Spot), Low (Spot), Strobe
 - Induction sensor for wave control
- COB LED with Latest Technology**

 - Suitable for continuous illumination
- Comfortable Headband**

 - Adjustable length
 - Breathable and stretchable material
- Convenience and Portability**

 - Type-C charging port
 - IPX3 rating

Model	Unit	PL2
Modes		High (COB), Low (COB), High (Spot), Low (Spot), Strobe
Light Output	Lumen	350 (Spot), 175 (COB)
Rechargeable Battery Spec	mAh, V	1200, 3.7
Range	Feet	330 (Spot), 50 (COB)
Weatherproof Rating		IPX3
Working Time		4 Hours (High Mode), 6 Hours (Low Mode)
Dimensions	in	11.8 x 11.8 x 1.3
Weight	oz	2.47

PK1
Folding Utility Knife



Easy to Use

- Universal High-Strength Blade**

 - Quick blade-change mechanism
 - Works with standard utility knife blades
 - 3 extra blades included
- Built-in Metal Belt Clip**

 - Portable and easy to carry
- Easy Operation**

 - One-hand press & flip to open
 - Tool-less blade changes
- Durable Aluminum Construction**

PK2

2-IN-1 Compact Folding Knife



Compact & Versatile

- Universal High-Strength Blade**
 - Quick blade-change mechanism
 - Works with standard utility knife blades

Built-in Metal Belt Clip
 - Portable and easy to carry

Easy Operation
 - Tool-less blade changes
 - Press and push up for blade release
- Multi-Functional 2-in-1 Design**
 - Durable aluminum construction
 - Safety liner lock

Compact Folded Design at 4" Long

Rapid Y Connection Fitting

With it's large internal boring and flow-friendly design, NAVAC's Rapid-Y facilitates significantly faster and more efficient evacuation times when connecting more hoses to vacuum pump. When it comes to the recovery process, in conjunction with NAVAC's large diameter hoses and core removal tools, the Rapid-Y is the final piece in "ditching the manifold" to gain dramatic recovery speed.

Leading Technology, Superior Quality, Best Experience.
Empowering You to Work Smarter



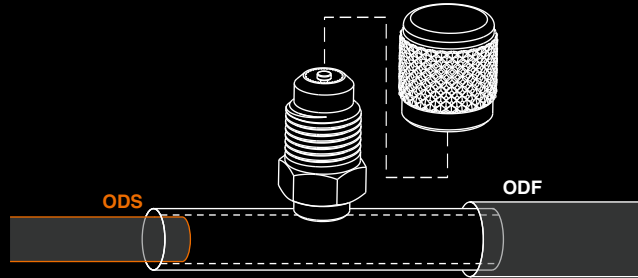
No Assembly • Less Turbulence • More Flow

- Single-piece solid brass construction
 - Vacuum rated to 20 microns
- Large internal boring for maximum flow and minimal resistance

Part No.	Fitting Configuration	Qty
F1028	2 x 3/8" M to 1x 3/8" FE	1 pack
F1029	2 x 3/8" M to 1x 1/4" FE	1 pack

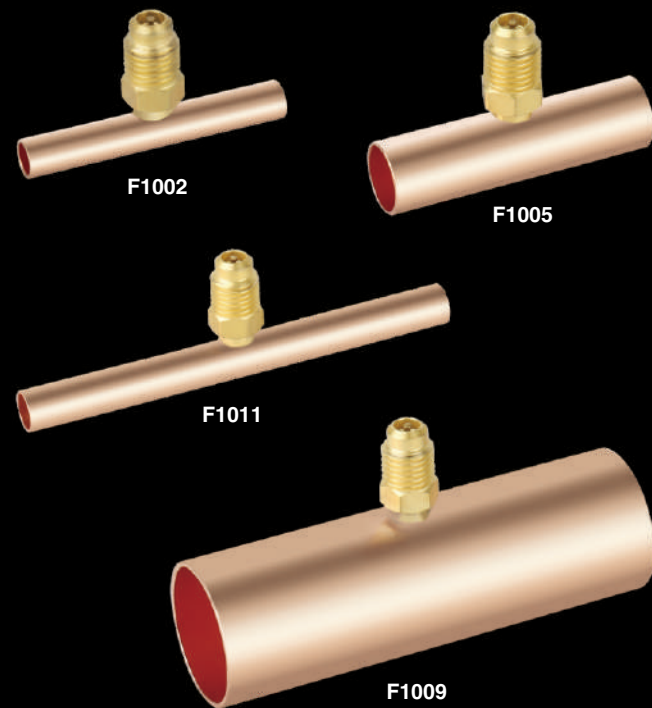
Slip Fit Copper Braze Tee

- 1/4" Male SAE Access Valve with valve core



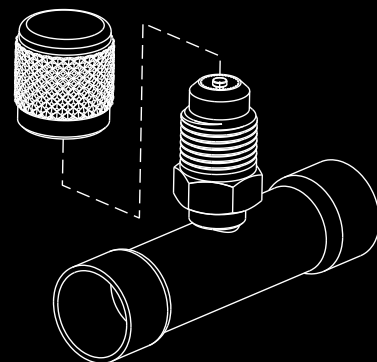
ODS = Outside Diameter Solder
ODF = Outside Diameter Female

Part No.	Fit Configuration	Length	Qty
F1002	1/4" ODS x 5/16" ODF	2-1/8"	3 pack
F1003	5/16" ODS x 3/8" ODF	2-1/8"	3 pack
F1004	3/8" ODS x 1/2" ODF	2-1/8"	3 pack
F1005	1/2" ODS	2-1/8"	3 pack
F1006	5/8" ODS	2-1/2"	1 pack
F1007	3/4" ODS	3"	1 pack
F1008	7/8" ODS	3-1/2"	1 pack
F1009	1-1/8" ODS	3-13/16"	1 pack
F1011	1/4" ODS x 5/16" ODF	4"	2 pack

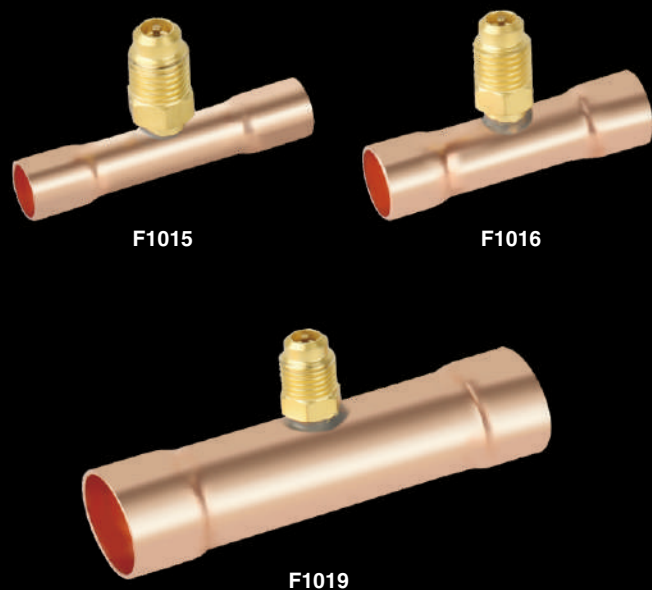


Swaged Copper Braze Tee

- 1/4" Male SAE Access Valve with valve core
- Braze cups on both ends



Part No.	Fit Configuration	Length	Qty
F1015	3/8" OD	2-1/8"	3 pack
F1016	1/2" OD	2-1/8"	3 pack
F1019	7/8" OD	3-1/2"	1 pack



1/4" Access Tee Connector with Flare Nut

- Includes (1) core and (1) cap



Part No.	Fitting Configuration	Depressor	Swivel Nut	Qty
F1022	1/4" SAE x 1/4" FE SAE Swivel	Yes	On Run	3 pack
F1023	1/4" SAE x 1/4" FE SAE Swivel	Yes	On Branch	3 pack
F1024	3/8" SAE x 3/8" FE SAE Swivel	No	On Run	1 pack
F1025	1/4" SAE x 1/4" FE SAE Swivel	No	On Branch	3 pack
F1027	1/4" SAE x 1/4" FE SAE Swivel	No	On Run	3 pack

1/4" Access Tee Connector

- 1/4" SAE male
- x 1/4" SAE female with depressor
- x 1/4" SAE male
- Includes (1) core and (1) cap



Part No.	Fitting Configuration	Qty
F1030	1/4" SAE M x 1/4" SAE FE x 1/4" SAE M	2 pack

Backseat Control Valve

- 1/4" SAE x 1/4" O-Ring Connector



Part No.	Fitting Configuration	Qty
F1031	1/4" SAE M x 1/4" O-Ring Coupler	1 pack

Copper Tube Extension

- 1/4" Access Valve



Part No.	Fitting Configuration	Qty
F1042	1/8" OD	5 pack
F1043	3/16" OD x 1/8" ID	5 pack
F1044	1/4" OD x 3/16" ID	5 pack
F1045	5/16" OD x 1/4" ID	5 pack
F1046	3/8" OD x 5/16" ID	5 pack
F1048	1/2" OD	3 pack

Quick Coupler SAE Female Adapter



Part No.	Fitting Configuration	Qty
F2001	1/4" SAE M x 5/16" SAE FE	1 pack
F2002	5/16" SAE M x 1/4" SAE FE	1 pack

Swivel Female Flare x Solder Adapter



Part No.	Fitting Configuration	Qty
F2003	1/4" SAE FE x 1/4" OD	4 pack
F2004	3/8" SAE FE x 3/8" OD	4 pack
F2005	1/2" SAE FE x 1/2" OD	4 pack
F2006	5/8" SAE FE x 5/8" OD	2 pack
F2007	3/4" SAE FE x 3/4" OD	2 pack

Liquid Charging Adapter



Part No.	Fitting Configuration	Qty
F2008	1/4" SAE M x 1/4" SAE FE	1 pack
F2009	5/16" SAE M x 5/16" SAE FE	1 pack

A2L Adaptor for LH A2L Refrigerant Tanks



Part No.	Fitting Configuration	Qty
F2010	1/4" LH FPT x 1/4" SAE	1 pack

1/4" SAE Caps



F3005, F3007

Part No.	Description	Qty
F3002	1/4" SAE Plastic Cap with Gasket	5 pack
F3005	1/4" SAE Brass Cap with O-Ring	10 pack
F3007	3/8" SAE Brass Cap with Gasket	3 pack

Valve Core Accessories



Part No.	Description	Qty
F9001	1/4" Valve Cores	5 pack
F9007	1/4" Hose Gaskets	10 pack
F9011	NVR1 Valve Core Removal Tool Rebuild Kit	2 sets
F9013	Brass Core Depressors for Hoses	10 pack

Adapters



FH1214



FH1238



FH12K1



FH12K2



FHK1K2

Part No.	Description	Qty
FH1214	Adapter 1/2" to 1/4"	5 pack
FH1238	Adapter 1/2" to 3/8"	5 pack
FH12K1	Adapter 1/2" to KF16	1 pack
FH12K2	Adapter 1/2" to KF25	1 pack
FHK1K2	Adapter KF16 to KF25	1 pack

4 PORT

FHH4

4 Port Hose Hanger, 1/4", 1/4", 1/2", 3/8"

Innovative Hose Organizer for Professional Technicians

- Supporting professional hose management, only hanger to hold multiple hoses
- Premium metal material, built to last
- Modern finish for sleek aesthetic
- Light weight at 0.15 lbs
- Suitable for multi-sized fittings

Leading Technology, Superior Quality, Best Experience.

Empowering You to Work Smarter



Part No.	Description	Qty
FHH4	4 Port Hose Holder, 1/4", 1/4", 1/2", 3/8"	1 pack

Industry Changes

WE ARE READY FOR A2L, ARE YOU?



Vaccum Pumps



No.	Model	Description	No.	Model	Description
1	NP2D	BreakFree Cordless Vacuum Pump No Battery, 2 CFM	7	NP5DP2	Vacuum Pump, 5 CFM, Pro Series,
2	NP4D	BreakFree Cordless Vacuum Pump No Battery, 4 CFM	8	NP7DP2	Vacuum Pump, 7 CFM, Pro Series,
3	NP6D	BreakFree Cordless Vacuum Pump No Battery, 6 CFM	9	NRP6Di & NRP8Di	Smart Vacuum Pump w/ Display, 6 & 8 CFM
4	NP2DLM	BreakFree Cordless Vacuum Pump, 2 CFM	10	NP8DS & NP8DSV	Smart Vacuum Pump w & w/o vacuum gauge, 8 CFM
5	NP4DLM	BreakFree Cordless Vacuum Pump, 4 CFM	11	NP12DM	Vacuum Pump, Industrial Grade, Master Series
6	NP6DLM	BreakFree Cordless Vacuum Pump, 6 CFM			

Industry Changes

WE ARE READY FOR A2L, ARE YOU?



Recovery Units



Manifold Gauges

*For gauges, please refer to product details for compatible refrigerants.



No.	Model	Description	No.	Model	Description
1	NR7	Recovery Unit	7	N2A4C	Pro Plus Manifold Gauge, A2L (R-454B, 32, 22)
2	NRDD	Digital DC Recovery Unit	8	N4A4B	4-Valve Manifold Gauge, A2L (R-454B, 32, 410A, 22)
3	NRDC4M	4-Cylinder Recovery Unit	9	N2D72	Flex72 Manifold Gauge w/ Display, 72 Refrigerants
4	NMG12A	Pro Manifold Gauge, A2L (R-454B, 32, 410A, 22)	10	N2DX	Flex-X Manifold Gauge w/ HD Graphic Interface, 72 Refrigerants
5	NMG13A	Pro Manifold Gauge, A2L (R-32, 454B, 22)	11	NX1/NX1V	Nexus Digital Manifold Gauge w/wt Vacuum Gauge
6	N2A4B	Pro Plus Manifold Gauge, A2L (R-454B, 32, 410A, 22)	12	NX4/NX4V	Nexus Digital Manifold Gauge w/wt Vacuum Gauge , 4-Valve

Industry Changes

WE ARE READY FOR A2L, ARE YOU?



Testing Tools & Instruments



Hose & Accessory

A3 Compatible



No.	Model	Description	No.	Model	Description
1	NSP1	Bluetooth Pressure Probe w/ Digital Display	6	NH5L	Refrigerant Hose, A2L Reverse Thread, 5'
2	NML1	Refrigerant Leak Detector, R32 & R454B Compatible	7	F2010	A2L Adaptor for NH5L, 1/4" LH FPT x 1/4" MPT
3	SK2TP1	Smart Refrigerant Diagnostics Kit	8	NRDDF	Digital DC Recovery Unit, A3 Compatible
4	SK3TPH1	Smart Refrigerant & Air Side Diagnostics Kit	9	NP7DPF	Vacuum Pump, 7 CFM, Pro Series, A3 Compatible
5	NSV1	Smart Refrigerant Valve, Bluetooth			

Special Tools Needed, Processes Unchanged

ASHRAE Standard 34 designates every refrigerant with a letter (A or B) and number (1, 2/2L, 3) to classify its toxicity and flammability. The letter represents the refrigerant's toxicity, with "A" representing low toxicity and "B" for high. The number refers to the refrigerant's flammability. A Class 1 refrigerant is a refrigerant with little to no flame propagation and a low risk of igniting under normal circumstances. Class 3 refrigerants indicate our most flammable refrigerants. ASHRAE recently added the subclass of **2L** to represent Class 2 refrigerants that are significantly slower to ignite or burn than other Class 2 gases. When a substance is exposed to spark or flame, many people assume it will behave like water or gasoline. In reality, there's huge grey area in between. It's in this grey area that we find A2L refrigerants. They're much less flammable, but can certainly ignite if several factors align at the same time.

Refrigerant Safety Groups	Lower Toxicity OEL > 400ppm	Higher Toxicity OEL < 400ppm
Highly Flammable	A3 All Hydrocarbons	B3
Flammable HCFs, non-fluorocarbons	A2 R-152a	B2
Less Flammable Low Burning Velocity HCFs, HFC/HFO Blends, HFOs	A2L R-32, R-452B, R-454B, R-455A, R-516A, R-1234yf, R-134ze	B2L
Little to No Flame Propagation HFCs, HFC/HFO Blends, HFOs, HCFOs, HFO/chloro-olefin blends, non-fluorocarbons	A1 R410A, R-134a, R-744	B1

There is an inverse relationship between Global Warming Potential (GWP) and flammability. As the GWP goes down to acceptable levels, the flammability increases. Today for the residential and light commercial split or unitary markets, the GWP target is 750. The widely used R410A (A1 class) has a GWP of 2088, while R32 (A2L class) has a GWP of 675. Recent data shows that replacing R410A with R32 can help us avoid ~0.9°F of global warming by 2100. That's why we see an impending phasedown of HFCs, including R410A, and the inclusion of R32 or other A2L refrigerants in future equipment. EPA approved A2L refrigerants will bring us closest to being in line with the new GWP targets while having the least overall impact on installation, service and maintenance practices.

R32 and any flammable refrigerants **CANNOT** be used in any R22 or R410A refrigerant retrofit applications. If we look at the equipment coming off the assembly lines manufacturing A2L equipment, they are being designed at the factory to have the components already on board that mitigate the risks of A2L refrigerants, which we call "intrinsically safe". For A2L equipment best practices, always consult the manufacturers' literature before and during an installation for precise standards, requirements and considerations. **Always use tools that are rated for use with A2L refrigerants.**

NAVAC, the world's largest supplier of HVAC vacuum pumps in addition to a wide array of tools, gauges, charging machines, recovery units, and other industry-specific items, is one of the first manufacturers who offer a full line of A2L compatible tools.

What makes a tool A2L compliant?

- Sparkless Motor
- Soft Contact Power Switches
- Covered Connections for All Electrical Terminations
- Inclusion of a Fan



LESS IS MORE.

"Less is More" philosophy behind the T3 Power Tubing solutions demonstrate how investing in the right tools can lead to significant cost savings and increased efficiency. Over the past five years, the cost of fittings has skyrocketed, putting more pressure on contractors' bottom lines. **PowerT3 Tubing Expanders and Tubing Benders** allow you to virtually eliminate the need for fittings altogether. Having the ability to fabricate custom angles, fittings and piping designs gives the contractor complete control of both design and budget, in addition to reducing brazing time and materials.

By minimizing fitting usage and the associated expenses, NAVAC power tools help you achieve More with Less.

Power T³

TUBING TECHNOLOGIES FOR TECHNICIANS

“

After talking with HVAC contractors who own the NEF6LM Power Flaring Tool, they all agree this NEF6LM makes a better flare than a manual flaring tool and has changed the HVAC industry. They have also noticed the return on investment is swift because the tool pays for itself after just a few installations or repairs. With NAVAC's estimation, you can payback your tool as soon as ONE month!”



**\$ W I F T
PAYBACK**



NEF6LM
POWER
FLARE



NTE11L
POWER
EXPANDER



NTB7L
POWER
BENDER



OR



OR



LESS IS MORE.

Disregarding the additional labor associated with tube connections, fittings run a few bucks a piece. Use NAVAC to save cost right away.

NAVAC Product Model Number Index

MODEL	Page	Model	Page	Model	Page	Model	Page	Model	Page
CART1	40	FH1214	82	NH5L	69	NP7DP2	29	NVR2	52
F1002	79	FH1238	82	NH5R	69	NP7DPF	30	NX1	63
F1003	79	FH12K1	82	NH5S	69	NP8DS	32	NX1V	63
F1004	79	FH12K2	82	NH5SC	69	NP8DSV	32	NX4	64
F1005	79	FHH4	82	NH5Y	69	NPO68	40	NX4V	64
F1006	79	FHK1K2	82	NHB1	70	NR7	20	PC12W	13
F1007	79	N2A4	66	NHB2	70	NRD16T	36	PC15W	13
F1008	79	N2A4B	66	NHR38AA	70	NRD24M	37	PC6W	13
F1009	79	N2A4C	66	NHR38AB	70	NRD30M	37	PK1	76
F1011	79	N2A4D	66	NKS2	16	NRDC4M	23	PK2	77
F1015	79	N2A4E	66	NMC1	58	NRDD	21	PKB50	76, 77
F1016	79	N2DX	61, 62	NMG11A	65	NRDDF	22	PL1	74
F1019	79	N2D72	60	NMG12A	65	NRP6Di	31	PL2	75
F1022	80	N4A4	67	NMG13A	65	NRP8Di	31	SK2TP1	41
F1023	80	N4A4B	67	NMG14A	65	NRS2A	47	SK3TPH1	41
F1024	80	N4A4H	67	NMG15A	65	NRS2I01	55	SK2SV1	42
F1025	80	NAB1	16	NMGB1	68	NRS3I01	56		
F1027	80	NAPS1	38	NMH11H	68	NSH1	46		
F1028	78	NAQC1	02	NMH11L	68	NSP1	45		
F1029	78	NAQC2	02	NMH12H	68	NST1	43, 63, 64		
F1030	80	NAQC3	02	NMH12L	68	NST2	43, 63, 64		
F1031	80	NAQC4	02	NMH13H	68	NSTL	44		
F1042	80	NAQC5	02	NMH13L	68	NSV1	48		
F1043	80	NAQC6	02	NMH14H	68	NTB7	07		
F1044	80	NB1	24, 38	NMH14L	68	NTB7L	05, 06		
F1045	80	NBF2	02, 04, 06	NMH15H	68	NTBRK	06, 07		
F1046	80	NBP2	25, 26	NMG15L	68	NTC12	13		
F1048	80	NCA10	72	NML1	57	NTC15	13		
F2001	81	NCB10	73	NMT1200	54	NTC6	13		
F2002	81	NC2	36	NMT1000	53	NTD28	15		
F2003	81	NCF2	02, 04, 06	NMT300	59	NTE11H2	09		
F2004	81	NEF6LM	01, 02	NMV1	50	NTE11L	03, 04		
F2005	81	NEVK1	71	NMV1S	49	NTE7	08		
F2006	81	NEVK2	71	NOT30B	40	NTEQHK	04		
F2007	81	NEVK3	71	NP12DA1	35	NTF66	11		
F2008	81	NEVK4	71	NP12DM	34	NTF66C	11		
F2009	81	NF43	40	NP2D	27	NTF67D	12		
F2010	81	NFG1	18	NP2DLM	24	NTK1	17		
F3002	81	NH34AB	70	NP4D	27	NTR14	14		
F3005	81	NH34AC	70	NP4DLM	25	NTW1	10		
F3007	81	NH38BB	70	NP6D	27	NTWH41	10		
F9001	81	NH5B	69	NP6DLM	26	NTWR38	10		
F9007	81	NH5CB	69	NP5DP	28	NVO1G	39		
F9011	81	NH5CR	69	NP5DP2	29	NVO1Q	39		
F9013	81	NH5CY	69	NP7DP	28	NVR1	51		

Company Information:

NAVAC® Inc. is a leading provider of advanced HVAC Tools. We offer highly differentiated vacuum pumps, recovery units, refrigerant charging machines, manifold gauges and other tools for HVAC service technicians to make their job easier, more efficient and enjoyable.

Office Address:	125 Chubb Ave, Suite 310S Lyndhurst, NJ 07071
Telephone:	+1 877 MY-NAVAC
Fax:	+1 877 696 2822
Web URL:	www.NavacGlobal.com
Primary/Order Contact:	Phone: +1 877 MY-NAVAC, Fax: +1 877 696 2822 Email: Order@NavacGlobal.com

Facebook:
@NAVACHvactools



Instagram:
navac_inc



LinkedIn:
NAVAC HVAC



YouTube:
NAVAC Inc.



NAVAC'S No-Hassle Warranty

NAVAC Inc. GUARANTEES all NAVAC products to be free of defective material and craftsmanship which could affect the life of the product when used for purpose for which it is designed. This warranty does not cover items which have been abused, misused, or improperly maintained, (including failure to use the correct type of vacuum pump oil). The sole obligation under this warranty shall be to repair, replace (OTC Exchange), or provide credit for any defective product or parts thereof, at the discretion of NAVAC Inc. within the period mentioned below. In some instances, NAVAC Inc. may require the defective product be returned for warranty analysis.

Note: Warranty only applies if product is purchased from a NAVAC Authorized Dealer.

Different warranty periods cover different product groups, so please read carefully.

For more information about warranty, please visit <https://navacglobal.com/return-merchandise-authorization/>