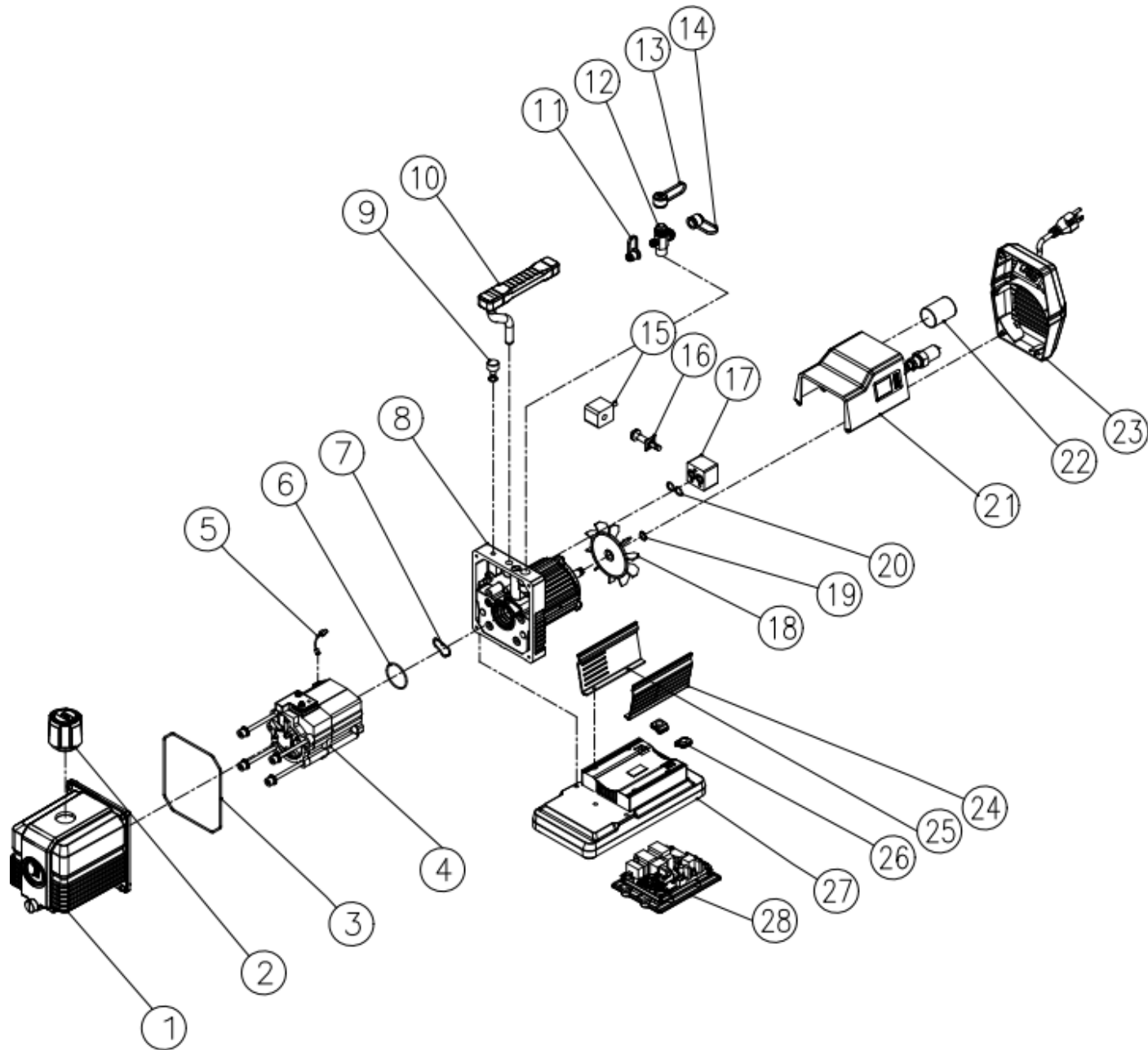


NRP8Di Parts Diagram



| Ref No. | Part No. | Description |
|-----------|-----------|--|
| 1 | RP18001 | Oil Sump |
| 2 | RP18002 | Exhaust Filter |
| 3 | RP18003 | O-ring (Oil Sump) |
| 4 | RP18004 | Not Available please order Pump Rebuild Kit below |
| 5 | RP18005 | Gas Ballast Assy |
| 6 | RP18006 | O-ring |
| 7 | RP18007 | O-ring |
| 8 | RP18008 | Motor Assy (Not Available) |
| 9 | RP18009 | Gas Ballast Knob |
| 10 | RP18010 | Handle |
| 11 | RP18011 | 1/4" Inlet Cap |
| 12 | RP18012 | Inlet Port |
| 13 | RP18013 | 3/8" Inlet Cap |
| 14 | RP18014 | 1/2" Inlet Cap |
| 15 | RP18015 | Solenoid Valve Winding |
| 16 | RP18016 | Iron Core Assy |
| 17 | RP18017 | Solenoid Valve Body |
| 18 | RP18018 | Fan Blade |
| 19 | RP18019 | Elastic Collar |
| 20 | RP18020 | O-ring |
| 21 | RP18021 | Digital Display Controller with Micron Sensor Assy |
| 22 | RP18022 | Capacitor |
| 23 | RP18023 | Back Cover w/Power cord |
| 24 | RP18024 | Side Guard I |
| 25 | RP18025 | Side Guard II |
| 26 | RP18026 | Sheath |
| 27 | RP18027 | Base Plate |
| 28 | RP18028 | Controller Assy PCB |
| Not Shown | RP18048 | Oil Seal in Trestle |
| Not Shown | RP18011-2 | O-Ring 1/4" Inlet cap |
| Not Shown | RP18013-2 | O-Ring 3/8" Inlet Cap |
| Not Shown | RP18014-2 | O-Ring 1/2" Inlet cap |
| Not Shown | RP18023-1 | Back Cover |
| Not Shown | RP18023-4 | Power Switch |
| Not Shown | RC16038 | Oil Drain Cap w/O-Ring |
| Not Shown | RP18023-3 | Power Cord |
| Not Shown | NKR-8D | Pump Rebuild Kit |